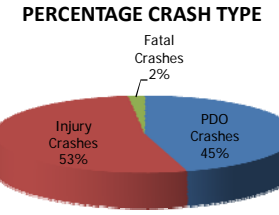


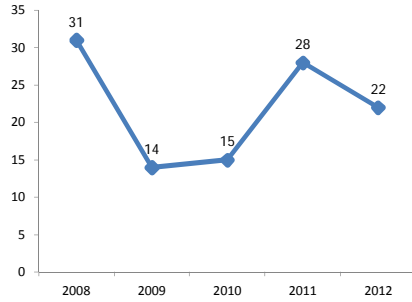
# 5-Year Crash Analysis SR 514 (Malabar Road) From SR 507 (Babcock Street) to US 1 (MP 3.060 to MP 6.698)

TOTAL NUMBER OF CRASHES												
	2008		2009		2010		2011		2012		Total	
	#	%	#	%	#	%	#	%	#	%	#	%
Property Damage Only (PDO) Crashes	14	45%	5	0%	9	0%	10	36%	12	55%	50	45.5
Injury Crashes	16	52%	9	0%	6	0%	17	61%	10	45%	58	52.7
Fatal Crashes	1	3%	0	0%	0	0%	1	4%	0	0%	2	1.8
<b>Total</b>	<b>31</b>	<b>28%</b>	<b>14</b>	<b>13%</b>	<b>15</b>	<b>0%</b>	<b>28</b>	<b>25%</b>	<b>22</b>	<b>20%</b>	<b>110</b>	
<b>Increase/Decrease</b>				<b>-121%</b>		<b>7%</b>		<b>46%</b>		<b>-27%</b>		

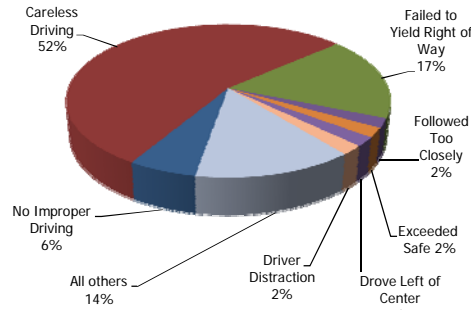
NUMBER OF VEHICLES INVOLVED						
	2008	2009	2010	2011	2012	Total
	<b>FATAL CRASHES</b>	1	0	0	1	0
Fatalities	1	0	0	1	0	2
Injuries	0	0	0	1	0	1
<b>INJURY CRASHES</b>	16	9	6	17	10	58
Injuries	24	19	13	25	14	95
<b>TOTAL # OF INJURED PEOPLE</b>	24	19	13	26	14	96
<b>TOTAL # OF VEH INVOLVED</b>	64	29	26	52	37	208
<b>INJURED + FATAL (TOTAL INVOLVED)</b>	25	19	13	27	14	98
<b>TOTAL PDO</b>	14	5	9	10	12	50



### TOTAL NUMBER OF CRASHES



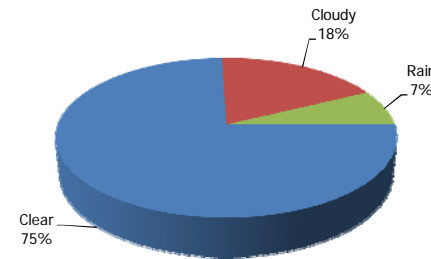
### CONTRIBUTING CAUSE



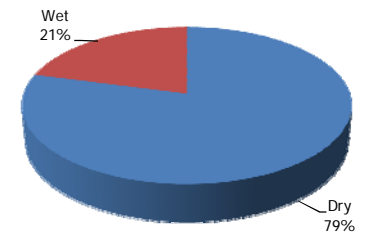
FIRST HARMFUL EVENT												
	2008		2009		2010		2011		2012		Total	
	#	%	#	%	#	%	#	%	#	%	#	%
Coll Rear End	13	42%	6	43%	5	33%	8	31%	10	45%	42	38.9
Coll Head On							1	4%	1	5%	2	1.9
Coll Angle	3	10%	3	21%	3	20%	7	27%	2	9%	18	16.7
Coll Left Turn	2	6%	1	7%	1	7%					4	3.7
Coll Right Turn	1	3%	1	7%							2	1.9
Coll Sideswipe	1	3%									1	0.9
Coll Backed Into	1	3%									1	0.9
Coll Parked Car												
Coll MV on Roadway							1	4%	1	5%	2	1.9
Coll w/ Pedestrian	1	3%							1	5%	2	1.9
Coll w/ Bicycle												
Coll w/ Bicycle (Bike Lane)												
Coll w/ Moped												
Coll w/ Train												
Coll w/ Animal									1	5%	1	0.9
MV Hit Sign/Sign Post												
MV Hit Utility Pole/Light Pole					2	13%	1	4%	2	9%	5	4.6
MV Hit Guardrail									1	5%	1	0.9
MV Hit Fence	1	3%									1	0.9
MV Hit Concrete Barrier Wall												
MV Hit Bridge/Pier/Abutment/Rail												
MV Hit Tree/Shrubbery	2	6%									2	1.9
Coll Const Barricade Sign												
Coll w/ Traffic Gate												
Coll w/ Crash Attenuators												
Coll w/ Fixed Objects Above Road												
MV Hit Other Fixed Objects												
Coll w/ Moveable Object on Road												
MV Ran Into Ditch/Culvert	2	6%	1	7%	2	13%	3	12%	2	9%	10	9.3
Ran Off Road Into Water												
Overtuned							3	12%			3	2.8
Occupant Fell From Veh												
Tractor/Trailer Jackknifed												
Fire												
Explosion												
Downhill Runaway												
Cargo Loss or Shift	1	3%									1	0.9
Separation of Units			1	7%							1	0.9
Median Crossover												
All other	3	10%	1	7%	2	13%	2	8%	1	5%	9	8.3
<b>Total</b>	<b>31</b>	<b>29%</b>	<b>14</b>	<b>0%</b>	<b>15</b>	<b>0%</b>	<b>26</b>	<b>24%</b>	<b>22</b>	<b>20%</b>	<b>108</b>	

CONTRIBUTING CAUSE												
	2008		2009		2010		2011		2012		Total	
	#	%	#	%	#	%	#	%	#	%	#	%
No Improper Driving			1	7%			2	8%	3	14%	6	5.6
Careless Driving	16	52%	9	64%	9	60%	13	50%	9	41%	56	51.9
Failed to Yield Right of Way	3	10%	3	21%	5	33%	5	19%	2	9%	18	16.7
Improper Parking	1	3%									1	0.9
Improper Lane Change												
Improper Turn	1	3%									1	0.9
Alcohol-Under Influence												
Drugs - Under Influence												
Alcohol/Drugs												
Followed Too Closely							1	4%	1	5%	2	1.9
Disregarded Traffic Signal												
Exceeded Safe Speed							1	4%	1	5%	2	1.9
Disregarded Stop Sign	1	3%									1	0.9
Failed to Maintain Equip												
Improper Passing	1	3%									1	0.9
Drove Left of Center	2	6%									2	1.9
Exceeded Stated Speed Limit												
Obstructing Traffic												
Improper Load	1	3%									1	0.9
Disregarded Other Traffic Control									1	5%	1	0.9
Driving Wrong Side/Way												
Fleeing Police												
Vehicle Modified												
Driver Distraction	1	3%					1	7%			2	1.9
All others	4	13%	1	7%			4	15%	5	23%	14	13.0
<b>Total</b>	<b>31</b>	<b>29%</b>	<b>14</b>	<b>0%</b>	<b>15</b>	<b>0%</b>	<b>26</b>	<b>24%</b>	<b>22</b>	<b>20%</b>	<b>108</b>	

### WEATHER



### ROAD SURFACE CONDITION



ROAD SIDE												
	2008		2009		2010		2011		2012		Total	
	#	%	#	%	#	%	#	%	#	%	#	%
Left	10	32%	8	57%	5	33%	11	39%	7	32%	41	37.3
Right	21	68%	6	43%	9	60%	16	57%	12	55%	64	58.2
Intersection												
Middle/Median												
Left side-road					1	7%	1	4%	2	9%	4	3.6
Right side-road									1	5%	1	0.9
End of State Road												
All Other												
<b>Total</b>	<b>31</b>	<b>28%</b>	<b>14</b>	<b>13%</b>	<b>15</b>	<b>14%</b>	<b>28</b>	<b>25%</b>	<b>22</b>	<b>20%</b>	<b>110</b>	

ACCIDENT LANE NUMBER												
	2008		2009		2010		2011		2012		Total	
	#	%	#	%	#	%	#	%	#	%	#	%
Acceleration/Merge lane												
Toll Plaza												
Painted Crosswalk												
End of State Road												
Island Area	1	3%									1	0.9
Service/Access Road												
Left Turn Lane					1	7%	1	4%	1	5%	3	2.7
Median/Middle												
Parking Lane												
Right Turn Lane	1	3%			3	20%	1	4%	1	5%	6	5.5
Side of the Road/Shoulder	10	32%	2	14%	4	27%	7	25%	6	27%	29	26.4
Continuous Turn Lane (Center)												
Unknown					2	13%					2	1.8
Bicycle Lane												
Ramp												
1: Thru-Lanes (numbered from center outward)	17	55%	12	86%	5	33%	19	68%	13	59%	66	60.0
2: Thru-Lanes (numbered from center outward)	1	3%									1	0.9
3: Thru-Lanes (numbered from center outward)	1	3%							1	5%	2	1.8
4: Thru-Lanes (numbered from center outward)												
5: Thru-Lanes (numbered from center outward)												
All Other												
<b>Total</b>	<b>31</b>	<b>28%</b>	<b>14</b>	<b>13%</b>	<b>15</b>	<b>14%</b>	<b>28</b>	<b>25%</b>	<b>22</b>	<b>20%</b>	<b>110</b>	

ROAD CONDITION AT TIME OF CRASH												
	2008		2009		2010		2011		2012		Total	
	#	%	#	%	#	%	#	%	#	%	#	%
No Defects	30	97%	13	93%	15	100%	28	100%	20	91%	106	96.4
Obstruction with Warning												
Obstruction without Warning												
Road Under Repair/Construction	1	3%							1	5%	2	1.8
Loose Surface Materials												
Shoulders Soft/Low/High												
Holes/Ruts/Unsafe Paved Edge												
Standing Water			1	7%					1	5%	2	1.8
Worn / Polished Road Surface												
All Others												
<b>Total</b>	<b>31</b>	<b>28%</b>	<b>14</b>	<b>13%</b>	<b>15</b>	<b>14%</b>	<b>28</b>	<b>25%</b>	<b>22</b>	<b>20%</b>	<b>110</b>	

ROAD SURFACE CONDITION												
	2008		2009		2010		2011		2012		Total	
	#	%	#	%	#	%	#	%	#	%	#	%
Dry	21	68%	11	79%	13	87%	25	89%	17	77%	87	79.1
Wet	10	32%	3	21%	2	13%	3	11%	5	23%	23	20.9
Slippery												
Icy												
All Other												
<b>Total</b>	<b>31</b>	<b>28%</b>	<b>14</b>	<b>13%</b>	<b>15</b>	<b>14%</b>	<b>28</b>	<b>25%</b>	<b>22</b>	<b>20%</b>	<b>110</b>	

POINT OF IMPACT												
	2008		2009		2010		2011		2012		Total	
	#	%	#	%	#	%	#	%	#	%	#	%
Front End	15	48%	6	43%	9	60%	14	54%	10	45%	54	50.0
Right Front End	1	3%			2	13%	1	4%	4	18%	8	7.4
Right Front Qtr Panel			1	7%			2	8%	2	9%	5	4.6
Right Front Door	2	6%			2	13%	1	4%			5	4.6
Right Rear Door							1	4%			1	0.9
Right Rear Qtr Panel												
Right Rear Corner	1	3%									1	0.9
Rear End												
Left Rear Corner												
Left Rear Qtr Panel	2	6%							1	5%	3	2.8
Left Rear Door									1	5%	1	0.9
Left Front Door							1	4%			1	0.9
Left Front Qtr Panel			1	7%			1	4%	1	5%	3	2.8
Left Front Corner	6	19%	4	29%	1	7%	2	8%	2	9%	15	13.9
Hood												
Roof												
Trunk												
Undercarriage												
Overturn	1	3%					3	12%			4	3.7
Windshield												
Trailer			1	7%							1	0.9
Unknown/Other	3	10%	1	7%	1	7%			1	5%	6	5.6
<b>Total</b>	<b>31</b>	<b>29%</b>	<b>14</b>	<b>13%</b>	<b>15</b>	<b>14%</b>	<b>26</b>	<b>24%</b>	<b>22</b>	<b>20%</b>	<b>108</b>	

SITE LOCATION												
	2008		2009		2010		2011		2012		Total	
	#	%	#	%	#	%	#	%	#	%	#	%
Not At Intersection / RR X-rinq / Bridge	15	48%	7	50%	3	20%	8	29%	7	32%	40	36.4
At Intersection	14	45%	7	50%	5	33%	11	39%	11	50%	48	43.6
Influenced By Intersection	1	3%			5	33%	6	21%	3	14%	15	13.6
Driveway Access	1	3%							1	5%	2	1.8
Railroad					1	7%	3	11%	1	5%	5	4.6
Bridge					1	7%					1	0.9
Entrance Ramp												
Exit Ramp												
Parking Lot-Public												
Parking Lot-Private												
Private Property												
Toll-Booth												
Public Bus Stop Zone												
All Other												
<b>Total</b>	<b>31</b>	<b>28%</b>	<b>14</b>	<b>13%</b>	<b>15</b>	<b>14%</b>	<b>28</b>	<b>25%</b>	<b>22</b>	<b>20%</b>	<b>110</b>	

VEHICLE INVOLVEMENT												
	2008		2009		2010		2011		2012		Total	
	#	%	#	%	#	%	#	%	#	%	#	%
1 Veh Crash	7	23%	2	14%	5	33%	9	32%	7	32%	30	27.3
2 Veh Crash	17	55%	9	64%	9	60%	15	54%	15	68%	65	59.1
3 Veh Crash	5	16%	3	21%	1	7%	3	11%			12	10.9
4+ Veh Crash	2	6%					1	4%			3	2.7
<b>Total</b>	<b>31</b>	<b>28%</b>	<b>14</b>	<b>13%</b>	<b>15</b>	<b>14%</b>	<b>28</b>	<b>25%</b>	<b>22</b>	<b>20%</b>	<b>110</b>	

VEHICLE USE												
	2008		2009		2010		2011		2012		Total	
	#	%	#	%	#	%	#	%	#	%	#	%
Private Transportation	29	94%	14	100%	15	100%	26	100%	19	86%	103	95.4
Commercial Passengers												
Commercial Cargo	2	6%									2	1.9
Public Transportation												
Public School Bus												
Private School Bus												
Ambulance												
Law Enforcement									1	5%	1	0.9
Fire/Rescue												
Military												
Other Government												
Dump												
Concrete Mixer												
Gargabe or Refuse												
Cargo Van												
Other									2	9%	2	1.9
<b>Total</b>	<b>31</b>	<b>29%</b>	<b>14</b>	<b>13%</b>	<b>15</b>	<b>14%</b>	<b>26</b>	<b>24%</b>	<b>22</b>	<b>20%</b>	<b>108</b>	

VEHICLE TYPE												
	2008		2009		2010		2011		2012		Total	
	#	%	#	%	#	%	#	%	#	%	#	%
Automobile	16	52%	7	50%	9	60%	12	46%	12	55%	56	51.9
Van	2	6%	2	14%	1	7%	1	4%			6	5.6
Light Truck/ P.U. - 2 or 4 rear tires	10	32%	4	29%	5	33%	6	23%	9	41%	34	31.5
Medium Truck - 4 rear tires	1	3%									1	0.9
Heavy Truck - 2 or more rear axles	1	3%									1	0.9
Truck Tractor (Cab-Boat)												
Motor Home (RV)												
Bus (driver + seats for 9 - 15)												
Bus (driver + seats over 15)												
Bicycle												
Motorcycle	1	3%	1	7%			6	23%	1	5%	9	8.3
Moped												
All Terrain Vehicle												
Train												
Low Speed Vehicle												
Other												
<b>Total</b>	<b>31</b>	<b>29%</b>	<b>14</b>	<b>13%</b>	<b>15</b>	<b>14%</b>	<b>26</b>	<b>24%</b>	<b>22</b>	<b>20%</b>	<b>108</b>	

VEHICLE MOVEMENT												
	2008		2009		2010		2011		2012		Total	
	#	%	#	%	#	%	#	%	#	%	#	%
Straight Ahead	21	68%	10	71%	9	60%	18	69%	16	73%	74	68.5
Slowing / Stopped / Stalled	2	6%					1	4%	2	9%	5	4.6
Making Left Turn	3	10%	3	21%	6	40%	4	15%	1	5%	17	15.7
Backing	1	3%									1	0.9
Making Right Turn	1	3%	1	7%			3	12%			5	4.6
Changing Lanes	1	3%							1	5%	2	1.9
Entering / Leaving Parking Space												
Property Parked												
Improperly Parked												
Making U-Turn												
Passing	2	6%									2	1.9
Driverless or Runaway Vehicle												
All Other									2	9%	2	1.9
<b>Total</b>	<b>31</b>	<b>29%</b>	<b>14</b>	<b>13%</b>	<b>15</b>	<b>14%</b>	<b>26</b>	<b>24%</b>	<b>22</b>	<b>20%</b>	<b>108</b>	

TIME OF DAY												
	2008		2009		2010		2011		2012		Total	
	#	%	#	%	#	%	#	%	#	%	#	%
1:00 AM			1	7%							1	0.9
2:00 AM	1	3%	1	7%			1	4%	1	5%	4	3.6
3:00 AM												
4:00 AM	1	3%					1	4%			2	1.8
5:00 AM	1	3%			1	7%	1	4%			3	2.7
6:00 AM	1	3%					1	4%	2	9%	4	3.6
7:00 AM	1	3%	1	7%	3	20%	3	11%	1	5%	9	8.2
8:00 AM	3	10%			1	7%	2	7%	2	9%	8	7.3
9:00 AM			2	14%					1	5%	3	2.7
10:00 AM												
11:00 AM	1	3%			2	13%	4	14%	1	5%	8	7.3
12:00 PM	1	3%					1	4%			2	1.8
1:00 PM			1	7%			2	7%	1	5%	4	3.6
2:00 PM	5	16%	1	7%			1	4%			7	6.4
3:00 PM	1	3%			1	7%	3	11%	2	9%	7	6.4
4:00 PM	5	16%	1	7%	1	7%	3	11%	2	9%	12	10.9
5:00 PM	4	13%	2	14%			1	4%	3	14%	10	9.1
6:00 PM	1	3%	2	14%	1	7%	1	4%	1	5%	6	5.5
7:00 PM	2	6%	1	7%	1	7%	1	4%	1	5%	6	5.5
8:00 PM							1	4%			1	0.9
9:00 PM	1	3%	1	7%	2	13%					4	3.6
10:00 PM	1	3%							1	5%	2	1.8
11:00 PM					1	7%	1	4%	3	14%	5	4.5
12:00 AM	1	3%			1	7%					2	1.8
<b>Total</b>	<b>31</b>	<b>28%</b>	<b>14</b>	<b>13%</b>	<b>15</b>	<b>14%</b>	<b>28</b>	<b>25%</b>	<b>22</b>	<b>20%</b>	<b>110</b>	

AGE												
	2008		2009		2010		2011		2012		Total	
	#	%	#	%	#	%	#	%	#	%	#	%
16-25	7	23%	5	36%	7	47%	6	23%	6	27%	31	28.7
26-40	9	29%	2	14%	1	7%	7	27%	4	18%	23	21.3
41-65	9	29%	4	29%	3	20%	12	46%	7	32%	35	32.4
Over 65	1	3%	3	21%	2	13%	1	4%	4	18%	11	10.2
Unknown or Other	5	16%			2	13%			1	5%	8	7.4
<b>Total</b>	<b>31</b>	<b>29%</b>	<b>14</b>	<b>13%</b>	<b>15</b>	<b>14%</b>	<b>26</b>	<b>24%</b>	<b>22</b>	<b>20%</b>	<b>108</b>	

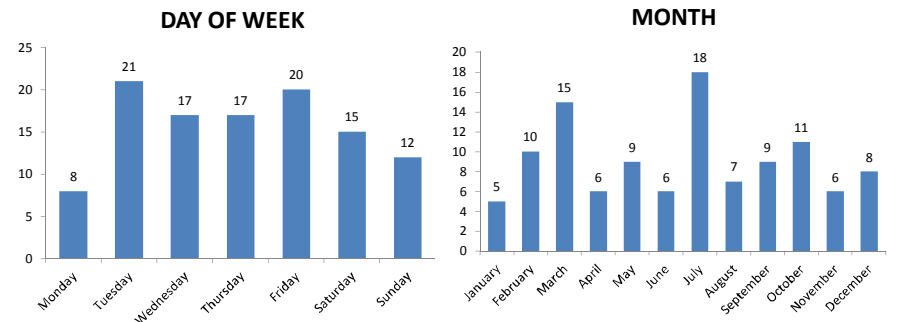
ALCOHOL/DRUGS INVOLVEMENT												
	2008		2009		2010		2011		2012		Total	
	#	%	#	%	#	%	#	%	#	%	#	%
None	27	87%	11	79%	14	93%	25	89%	20	91%	97	88.2
Alcohol Involved	4	13%	3	21%	1	7%	2	7%	2	9%	12	10.9
Drugs Involved												
Alcohol and Drugs Involved							1	4%			1	0.9
Undetermined												
<b>Total</b>	<b>31</b>	<b>28%</b>	<b>14</b>	<b>13%</b>	<b>15</b>	<b>14%</b>	<b>28</b>	<b>25%</b>	<b>22</b>	<b>20%</b>	<b>110</b>	


VEHICLE DIRECTION												
	2008		2009		2010		2011		2012		Total	
	#	%	#	%	#	%	#	%	#	%	#	%
North	4	13%			1	7%	1	4%	1	5%	7	6.4
South	1	3%	2	14%	3	20%	2	7%	1	5%	9	8.2
East	16	52%	5	36%	8	53%	9	32%	12	55%	50	45.5
West	10	32%	7	50%	3	20%	14	50%	8	36%	42	38.2
Unknown							2	7%			2	1.8
<b>Total</b>	<b>31</b>	<b>28%</b>	<b>14</b>	<b>13%</b>	<b>15</b>	<b>14%</b>	<b>28</b>	<b>25%</b>	<b>22</b>	<b>20%</b>	<b>110</b>	

WEATHER												
	2008		2009		2010		2011		2012		Total	
	#	%	#	%	#	%	#	%	#	%	#	%
Clear	19	61%	10	71%	13	87%	24	86%	16	73%	82	74.5
Cloudy	10	32%	2	14%	2	13%	4	14%	2	9%	20	18.2
Rain	2	6%	2	14%					4	18%	8	7.3
Fog												
All Other												
<b>Total</b>	<b>31</b>	<b>28%</b>	<b>14</b>	<b>13%</b>	<b>15</b>	<b>14%</b>	<b>28</b>	<b>25%</b>	<b>22</b>	<b>20%</b>	<b>110</b>	

LIGHTING												
	2008		2009		2010		2011		2012		Total	
	#	%	#	%	#	%	#	%	#	%	#	%
Daylight	23	74%	9	64%	8	53%	21	75%	15	68%	76	69.1
Dusk	1	3%					2	7%			3	2.7
Dawn					2	13%	2	7%	1	5%	5	4.5
Dark (Street Light)	4	13%	3	21%	3	20%			5	23%	15	13.6
Dark (No Street Light)	3	10%	2	14%	2	13%	3	11%	1	5%	11	10.0
Unknown												
<b>Total</b>	<b>31</b>	<b>28%</b>	<b>14</b>	<b>13%</b>	<b>15</b>	<b>14%</b>	<b>28</b>	<b>25%</b>	<b>22</b>	<b>20%</b>	<b>110</b>	

MONTH												
	2008		2009		2010		2011		2012		Total	
	#	%	#	%	#	%	#	%	#	%	#	%
January	2	6%	1	7%			1	4%	1	5%	5	4.5
February	5	16%	3	21%			2	7%			10	9.1
March	4	13%	2	14%	5	33%	2	7%	2	9%	15	13.6
April	2	6%	2	14%	2	13%					6	5.5
May	2	6%	1	7%	2	13%	2	7%	2	9%	9	8.2
June	1	3%			1	7%	2	7%	2	9%	6	5.5
July	6	19%			2	13%	2	7%	3	14%	18	16.4
August			2	14%			4	14%	1	5%	7	6.4
September	3	10%					2	7%	4	18%	9	8.2
October	1	3%	2	14%	2	13%	4	14%	2	9%	11	10.0
November	3	10%					1	4%	2	9%	6	5.5
December	2	6%	1	7%	1	7%	1	4%	3	14%	8	7.3
<b>Total</b>	<b>31</b>	<b>28%</b>	<b>14</b>	<b>13%</b>	<b>15</b>	<b>14%</b>	<b>28</b>	<b>25%</b>	<b>22</b>	<b>20%</b>	<b>110</b>	



Site Information	
Feature	1
Site	700379
Description	ON SR-514, 0.463 MI. E OF SR-507 (UVL)
Section	70180000
Milepoint	3.568
AADT	<b>18500</b>
Site Type	Portable
Class Data	No
K Factor	9
D Factor	54.2
T Factor	6.7
TRAFFIC REPORTS (provided in  format)	
Brevard County	<a href="#">Annual Average Daily Traffic</a>
	<a href="#">Historical AADT Data</a>
	<a href="#">Synopsis 700379-20130813</a>


Print this window.

Close this window.

COUNTY: 70  
 STATION: 0379  
 DESCRIPTION: ON SR-514, 0.463 MI. E OF SR-507 (UVL)  
 START DATE: 08/13/2013  
 START TIME: 1200

TIME	DIRECTION: E					DIRECTION: W					COMBINED TOTAL	
	1ST	2ND	3RD	4TH	TOTAL	1ST	2ND	3RD	4TH	TOTAL		
0000	14	12	10	10	46	17	13	17	9	56	102	
0100	7	13	6	5	31	15	8	13	11	47	78	
0200	18	5	5	5	33	12	6	8	4	30	63	
0300	2	2	4	9	17	9	4	4	6	23	40	
0400	6	7	13	13	39	8	6	14	8	36	75	
0500	16	19	27	38	100	11	23	31	35	100	200	
0600	37	76	129	167	409	44	56	74	85	259	668	
0700	137	138	178	207	660	125	144	166	162	597	1257	
0800	224	179	185	167	755	152	147	109	145	553	1308	
0900	156	138	136	153	583	124	130	123	148	525	1108	
1000	108	139	140	115	502	134	136	134	132	536	1038	
1100	107	112	114	124	457	143	130	115	143	531	988	
1200	125	123	121	118	487	149	146	149	166	610	1097	
1300	143	131	124	130	528	129	114	146	154	543	1071	
1400	132	127	149	141	549	132	153	152	121	558	1107	
1500	123	128	135	170	556	166	155	156	186	663	1219	
1600	152	167	151	145	615	224	170	183	212	789	1404	
1700	127	174	147	141	589	223	234	189	186	832	1421	
1800	143	137	146	126	552	183	151	134	119	587	1139	
1900	113	103	77	86	379	132	113	126	99	470	849	
2000	90	63	64	63	280	90	86	72	63	311	591	
2100	49	55	46	66	216	64	45	42	38	189	405	
2200	54	29	32	36	151	37	44	29	27	137	288	
2300	23	25	19	21	88	31	31	27	19	108	196	
24-HOUR TOTALS:					8622						9090	17712

	DIRECTION: E		DIRECTION: W		COMBINED DIRECTIONS	
	HOUR	VOLUME	HOUR	VOLUME	HOUR	VOLUME
A.M.	745	795	730	627	730	1415
P.M.	1545	640	1645	858	1645	1451
DAILY	745	795	1645	858	1645	1451

Site Information	
Feature	1
Site	700127
Description	ON SR-514, 1.097 MI. W OF SR-5 (US-1) (U VL)
Section	70180000
Milepoint	5.642
AADT	<b>10600</b>
Site Type	Portable
Class Data	No
K Factor	9
D Factor	54.2
T Factor	6.7
TRAFFIC REPORTS (provided in  format)	
Brevard County	<a href="#">Annual Average Daily Traffic</a>
	<a href="#">Historical AADT Data</a>
	<a href="#">Synopsis 700127-20130813</a>


Print this window.

Close this window.

COUNTY: 70  
 STATION: 0127  
 DESCRIPTION: ON SR-514, 1.097 MI. W OF SR-5 (US-1) (UVL)  
 START DATE: 08/13/2013  
 START TIME: 1330

TIME	DIRECTION: E					DIRECTION: W					COMBINED TOTAL	
	1ST	2ND	3RD	4TH	TOTAL	1ST	2ND	3RD	4TH	TOTAL		
0000	8	13	11	13	45	10	6	6	5	27	72	
0100	3	12	5	9	29	3	6	3	3	15	44	
0200	4	2	5	3	14	4	1	3	1	9	23	
0300	8	0	6	2	16	1	1	5	5	12	28	
0400	6	5	7	5	23	5	7	10	11	33	56	
0500	9	15	18	23	65	16	16	33	29	94	159	
0600	23	49	48	57	177	37	61	105	109	312	489	
0700	70	53	68	76	267	109	133	164	153	559	826	
0800	60	64	56	73	253	176	124	120	115	535	788	
0900	54	78	59	58	249	84	81	86	81	332	581	
1000	68	48	64	61	241	69	81	97	66	313	554	
1100	63	69	53	75	260	64	58	77	74	273	533	
1200	65	62	72	89	288	72	57	80	71	280	568	
1300	74	68	71	57	270	76	82	78	80	316	586	
1400	80	96	59	74	309	78	66	79	73	296	605	
1500	75	77	99	104	355	75	89	82	98	344	699	
1600	94	107	129	116	446	77	99	91	83	350	796	
1700	116	117	129	83	445	81	100	75	88	344	789	
1800	95	83	90	79	347	88	76	64	68	296	643	
1900	64	71	58	45	238	58	58	51	55	222	460	
2000	64	48	41	44	197	37	27	38	29	131	328	
2100	51	33	22	28	134	35	25	32	33	125	259	
2200	27	24	24	23	98	24	22	20	17	83	181	
2300	25	21	13	16	75	17	8	12	11	48	123	
24-HOUR TOTALS:					4841						5349	10190

	DIRECTION: E		DIRECTION: W		COMBINED DIRECTIONS	
	HOUR	VOLUME	HOUR	VOLUME	HOUR	VOLUME
A.M.	730	268	715	626	730	885
P.M.	1630	478	1545	365	1630	833
DAILY	1630	478	715	626	730	885

Site Information	
Feature	1
Site	701001
Description	ON SR-514, 0.119 MI. W OF US-1 (UCLP)
Section	70180000
Milepoint	6.623
AADT	<b>11800</b>
Site Type	Portable
Class Data	Yes
K Factor	9
D Factor	54.2
T Factor	5.6
TRAFFIC REPORTS (provided in  format)	
Brevard County	<a href="#">Annual Average Daily Traffic</a>
	<a href="#">Annual Vehicle Classification</a>
	<a href="#">Historical AADT Data</a>
	<a href="#">Synopsis 701001CL-20130813</a>
	<a href="#">Vehicle Class History</a>

Print this window.

Close this window.



COUNTY: 70  
 STATION: 1001  
 DESCRIPTION: ON SR-514, 0.119 MI. W OF US-1 (UCLP)  
 START DATE: 08/13/2013  
 START TIME: 1315

TIME	DIRECTION: E					DIRECTION: W					COMBINED TOTAL	
	1ST	2ND	3RD	4TH	TOTAL	1ST	2ND	3RD	4TH	TOTAL		
0000	9	8	7	4	28	9	14	10	13	46	74	
0100	2	6	2	3	13	7	12	8	6	33	46	
0200	3	1	3	1	8	4	3	4	4	15	23	
0300	1	0	6	5	12	7	1	5	3	16	28	
0400	4	9	12	10	35	6	5	6	6	23	58	
0500	19	15	32	33	99	11	17	16	21	65	164	
0600	40	63	116	116	335	28	53	55	55	191	526	
0700	106	143	155	180	584	74	66	78	102	320	904	
0800	180	127	129	117	553	74	65	76	65	280	833	
0900	87	92	88	79	346	72	89	90	67	318	664	
1000	74	79	95	77	325	77	68	62	76	283	608	
1100	64	62	71	80	277	69	73	78	77	297	574	
1200	65	65	94	70	294	80	74	92	93	339	633	
1300	89	84	71	79	323	91	94	97	65	347	670	
1400	73	70	85	72	300	97	111	79	100	387	687	
1500	72	85	83	95	335	105	100	118	130	453	788	
1600	79	95	98	88	360	139	127	178	160	604	964	
1700	81	92	81	86	340	188	180	172	152	692	1032	
1800	88	83	74	64	309	137	90	102	88	417	726	
1900	67	59	56	51	233	67	74	65	57	263	496	
2000	46	25	35	29	135	60	55	45	42	202	337	
2100	36	24	31	30	121	52	36	38	21	147	268	
2200	23	23	24	13	83	30	20	24	23	97	180	
2300	19	9	12	11	51	23	21	16	16	76	127	
24-HOUR TOTALS:					5499						5911	11410

	DIRECTION: E		DIRECTION: W		COMBINED DIRECTIONS	
	HOUR	VOLUME	HOUR	VOLUME	HOUR	VOLUME
A.M.	715	658	700	320	715	978
P.M.	1545	367	1630	706	1630	1065
DAILY	715	658	1630	706	1630	1065
TRUCK PERCENTAGE	5.49		5.77		5.64	

CLASSIFICATION SUMMARY DATABASE																	
DIR	1	2	3	4	5	6	7	8	9	10	11	12	13	14	15	TOTTRK	TOTVOL
E	56	3999	1142	25	182	35	0	36	24	0	0	0	0	0	0	302	5499
W	33	4495	1042	27	205	31	4	43	31	0	0	0	0	0	0	341	5911

REPORT..CARPJ85-  
DATE...03/03/2014  
TIME...13:48:48

FLORIDA - DEPARTMENT OF TRANSPORTATION  
C A R - CRASH ANALYSIS REPORTING SYSTEM  
SEGMENT BASED CRASH RATE STATISTICS

PAGE NO 0  
AS OF: 2014-01-30

COMMENT: USERID: KN028CD

=====  
CC - CRASH RATE CATEGORY CODE DESCRIPTIONS AVG/YEAR \$/CRASH@CRA C-NO-INJ C-POSSIBLE C-N-INCAP C-INCAP C-FATAL C-NT-FATAL  
I/A CRASH CRASHES MV MILES CRASH RATE CL MILES \$/CRASH@INJ P-NO-INJ P-POSSIBLE P-N-INCAP P-INCAP P-FATAL P-NT-FATAL  
=====

DETAIL PRINT LINE LEGEND - REFER TO SHORT TITLES IN THE HEADING LINES ABOVE

- CC - CRASH RATE CATEGORY CODE AND DESCRIPTION
- CRASHES - TOTAL NUMBER OF CRASHES
- I/A CRASH - TOTAL NUMBER OF "INLUENCE AREA" CRASHES
- MV MILES - MILLION VEHICLE MILES
- CRASH RATE - AVERAGE SEGMENT CRASH RATE
- CL MILES - ROADWAY CENTER LINE MILES
- \$ PER CRASH - AVERAGE ECONOMIC LOSS PER CRASH
- C-NO-INJ - CRASHES WITH PROPERTY DAMAGE ONLY
- C-POSSIBLE - CRASHES WITH POSSIBLE INJURIES
- C-N-INCAP - CRASHES WITH NON-INCAPACITATE INJURIES
- C-INCAP - CRASHES WITH INCAPACITATE INJURIES
- C-FATAL - CRASHES WITH FATALITIES
- C-NT-FATAL - CRASHES WITH NON-TRAFFIC FATALITIES
- \$ PER INJRY - AVERAGE ECONOMIC LOSS PER INJURY
- P-NO-INJ - PEOPLE WITH NO INJURIES
- P-POSS-INJ - PEOPLE WITH POSSIBLE INJURIES
- P-N-INCAP - PEOPLE WITH NON-INCAPACITATING INJURIES
- P-INCAP - PEOPLE WITH INCAPACITATING INJURIES
- P-FATAL - FATALITIES
- P-NT-FATAL - NON-TRAFFIC FATAILLITES

CURRENT BASE CALENDAR YEAR: 2012  
CARPJ81 CRASH EXTRACT DATE: 2014-01-30 21:00:10  
CARPJ82 FREEZE BREAK EXTRACT DATE: 2014-01-30 21:11:40  
CARPJ84 YEARLY ROLLUPS AND WEIGHTS DATE: 2014-01-30 21:12:21

CRASH DOLLAR VALUE WEIGHTS 1 THROUGH 6:	6,500	99,645	163,254	818,636	10,010,000	6,500
INJURY DOLLAR VALUE WEIGHTS 1 THROUGH 6:	0	66,430	125,580	629,720	9,100,000	0

AVAILABLE YEARS	2012	2011	2010	2009	2008
1 YEAR RATES	X	X	-	-	-
2 YEAR RATES	-	-	-	-	-
3 YEAR RATES	-	-	-	-	-
4 YEAR RATES	-	-	-	-	-
5 YEAR RATES	-	-	-	-	-

STATE WIDE: X STATE WIDE X BY DISTRICT \_ BY COUNTY

DISTRICTS: \_ \_ \_ \_ \_ BY DISTRICT \_ BY COUNTY

COUNTIES: \_ \_ \_ \_ \_



REPORT..CARPJ85-  
 DATE...03/03/2014  
 TIME...13:48:48

FLORIDA - DEPARTMENT OF TRANSPORTATION  
 C A R - CRASH ANALYSIS REPORTING SYSTEM  
 SEGMENT BASED CRASH RATE STATISTICS  
 DISTRICT: 05 COUNTY: ALL FOR 2012  
 USERID: KN028CD

PAGE NO 13  
 AS OF: 2014-01-30

COMMENT:

CC - CRASH RATE CATEGORY	CODE	DESCRIPTIONS	AVG/YEAR	\$/CRASH@CRA	C-NO-INJ	C-POSSIBLE	C-N-INCAP	C-INCAP	C-FATAL	C-NT-FATAL
I/A CRASH	CRASHES	MV MILES	CL MILES	\$/CRASH@INJ	P-NO-INJ	P-POSSIBLE	P-N-INCAP	P-INCAP	P-FATAL	P-NT-FATAL
01 - INTERSTATE URBAN				221,827	1,314	618	424	152	30	5
2	2,541	5,115.320	0.497	183.463	236,205	4,930	1,054	604	202	36
02 - INTERSTATE RURAL				422,969	324	84	107	68	17	0
0	600	1,538.361	0.390	95.706	433,669	1,122	180	176	99	18
03 - TOLL ROAD URBAN				126,675	236	95	116	10	2	0
8	451	1,377.742	0.333	95.534	120,100	741	168	145	12	2
04 - TOLL ROAD RURAL				364,095	57	17	27	3	3	0
2	105	310.533	0.344	29.777	368,048	193	38	41	7	3
05 - URBAN OTHER LIMITED ACCESS				620,602	22	9	3	4	2	0
1	39	108.244	0.369	14.106	582,127	58	14	3	6	2
06 - RURAL OTHER LIMITED ACCESS				0	0	0	0	0	0	0
0	0	0.000	0.000	0.000	0	0	0	0	0	0
07 - RAMP URBAN				182,440	343	172	105	28	6	1
604	51	3.369	0.000	15.368	169,985	1,203	252	138	36	6
08 - RAMP RURAL				187,413	1,186	627	421	117	21	2
1,382	992	204.756	0.000	200.868	182,382	4,486	999	578	149	22
10 - URBAN 2-3LN 2WY DIVD RASD				57,798	55	19	12	1	0	0
28	59	23.719	3.667	5.314	56,974	205	33	17	1	0
11 - URBAN 2-3LN 2WY DIVD PAVD				108,141	77	52	34	9	0	0
44	128	60.303	2.852	13.130	98,216	352	82	41	10	0
12 - URBAN 2-3LN 2WY UNDIVD				92,513	62	33	31	4	0	0
54	76	70.738	1.837	34.204	91,133	237	61	37	5	0
13 - SUBURBAN 2-3LN 2WY DIVD RASD				245,147	37	16	11	4	1	0
4	65	37.479	1.841	8.169	349,927	135	27	13	4	2
14 - SUBURBAN 2-3LN 2WY DIVD PAVD				235,311	175	108	75	36	4	0
67	331	317.955	1.251	70.734	235,052	785	205	121	45	4
15 - SUBURBAN 2-3LN 2WY UNDIVD				401,802	113	80	65	41	7	0
13	293	618.684	0.494	184.834	391,847	581	166	99	52	7
16 - RURAL 2-3LN 2WY DIVD RASD				901,034	5	2	4	1	1	0
0	13	9.713	1.338	2.371	822,290	26	5	5	1	1

REPORT..CARPJ85-  
 DATE...03/03/2014  
 TIME...13:48:48

FLORIDA - DEPARTMENT OF TRANSPORTATION  
 C A R - CRASH ANALYSIS REPORTING SYSTEM  
 SEGMENT BASED CRASH RATE STATISTICS  
 DISTRICT: 05 COUNTY: ALL FOR 2012  
 USERID: KN028CD

PAGE NO 14  
 AS OF: 2014-01-30

COMMENT:

CC	I/A	CRASH	CRASHES	CODE	DESCRIPTIONS	AVG/YEAR	\$/CRASH@CRA	C-NO-INJ	C-POSSIBLE	C-N-INCAP	C-INCAP	C-FATAL	C-NT-FATAL
						CL MILES	\$/CRASH@INJ	P-NO-INJ	P-POSSIBLE	P-N-INCAP	P-INCAP	P-FATAL	P-NT-FATAL
17	-	RURAL	2-3LN	2WY	DIVD PAVD		218,182	61	44	45	18	1	0
		20	149		112.487	1.502	35.682	209,838	297	92	71	18	1
18	-	RURAL	2-3LN	2WY	UNDIVD		690,083	169	75	97	51	22	1
		16	399		836.478	0.496	422.214	704,717	538	162	148	71	24
20	-	URBAN	4-5LN	2WY	DIVD RASD		170,271	1,580	989	681	196	21	2
		522	2,947		1,883.120	1.842	226.120	166,657	7,027	1,555	911	240	23
21	-	URBAN	4-5LN	2WY	DIVD PAVD		155,682	1,004	619	423	125	10	1
		445	1,737		779.321	2.799	92.465	153,739	4,579	1,015	555	156	11
22	-	URBAN	4-5LN	2WY	UNDIVD		228,793	64	54	47	8	2	0
		11	164		73.351	2.385	11.548	276,894	270	97	62	11	3
23	-	SUBURBAN	4-5LN	2WY	DIVD RASD		239,085	1,301	825	532	217	34	0
		158	2,751		2,367.406	1.228	287.493	241,174	5,940	1,468	750	275	37
24	-	SUBURBAN	4-5LN	2WY	DIVD PAVD		316,419	224	119	101	28	10	1
		31	452		305.826	1.579	33.739	301,281	1,185	211	142	36	10
25	-	SUBURBAN	4-5LN	2WY	UNDIVD		375,530	15	8	11	1	1	0
		5	31		18.878	1.906	2.424	352,321	67	18	14	1	1
26	-	RURAL	4-5LN	2WY	DIVD RASD		421,706	174	86	112	59	11	0
		5	437		708.544	0.623	172.364	460,863	587	168	180	82	13
27	-	RURAL	4-5LN	2WY	DIVD PAVD		1095,823	11	5	9	5	3	0
		0	33		54.015	0.610	13.455	1298,597	26	10	11	7	4
28	-	RURAL	4-5LN	2WY	UNDIVD		0	0	0	0	0	0	0
		0	0		0.000	0.000	0.000	0	0	0	0	0	0
30	-	URBAN	6+LN	2WY	DIVD RASD		187,435	2,382	1,477	855	221	45	1
		618	4,363		2,165.925	2.299	147.567	180,683	10,630	2,433	1,160	262	47
31	-	URBAN	6+LN	2WY	DIVD PAVD		185,335	344	182	109	48	5	0
		62	626		229.119	3.002	16.334	188,403	1,480	323	153	69	5
32	-	URBAN	6+LN	2WY	UNDIVD		0	0	0	0	0	0	0
		0	0		0.000	0.000	0.000	0	0	0	0	0	0
33	-	SUBURBAN	6+LN	2WY	DIVD RASD		142,930	566	409	195	47	6	0
		113	1,110		652.796	1.873	40.853	143,636	2,707	713	276	62	6

REPORT..CARPJ85-  
 DATE...03/03/2014  
 TIME...13:48:48

FLORIDA - DEPARTMENT OF TRANSPORTATION  
 C A R - CRASH ANALYSIS REPORTING SYSTEM  
 SEGMENT BASED CRASH RATE STATISTICS  
 DISTRICT: 05 COUNTY: ALL FOR 2012  
 USERID: KN028CD

PAGE NO 15  
 AS OF: 2014-01-30

COMMENT:

CC - CRASH RATE	CATEGORY	CODE	DESCRIPTIONS	AVG/YEAR	\$/CRASH@CRA	C-NO-INJ	C-POSSIBLE	C-N-INCAP	C-INCAP	C-FATAL	C-NT-FATAL
I/A CRASH	CRASHES	MV MILES	CRASH RATE	CL MILES	\$/CRASH@INJ	P-NO-INJ	P-POSSIBLE	P-N-INCAP	P-INCAP	P-FATAL	P-NT-FATAL
34 - SUBURBAN	6+LN	2WY	DIVD PAVD		1071,240	14	8	4	2	3	0
3	28	5.564	5.571	0.658	1068,809	65	12	5	7	3	0
35 - SUBURBAN	6+LN	2WY	UNDIVD		0	0	0	0	0	0	0
0	0	0.000	0.000	0.000	0	0	0	0	0	0	0
36 - RURAL	6+LN	2WY	DIVD RASD		661,926	17	9	5	0	2	0
0	33	11.096	2.974	0.760	624,453	100	23	7	0	2	0
37 - RURAL	6+LN	2WY	DIVD PAVD		0	0	0	0	0	0	0
0	0	0.000	0.000	0.000	0	0	0	0	0	0	0
38 - RURAL	6+LN	2WY	UNDIVD		0	0	0	0	0	0	0
0	0	0.000	0.000	0.000	0	0	0	0	0	0	0
40 - URBAN	ONE WAY				169,351	220	79	86	19	3	0
121	286	109.421	3.719	22.835	176,926	874	139	112	34	3	2
41 - SUBURBAN	ONE WAY				167,657	18	14	12	6	0	0
14	36	44.741	1.117	10.415	137,446	88	22	13	6	0	0
42 - RURAL	ONE WAY				6,500	1	0	0	0	0	0
1	0	0.678	1.474	0.846	0	2	0	0	0	0	0
77 - UNDEFINED					241,956	108	53	34	11	3	0
141	68	0.000	0.000	0.000	240,527	377	92	49	17	3	0
ALL CRASH RATE CATEGORIES					225,430	10,309	5,928	4,131	1,359	251	12
596	21,394	20,155.681	1.091	2,491.350	226,785	43,903	10,132	5,754	1,758	273	18

REPORT..CARPJ85-  
 DATE...03/03/2014  
 TIME...13:48:48

FLORIDA - DEPARTMENT OF TRANSPORTATION  
 C A R - CRASH ANALYSIS REPORTING SYSTEM  
 SEGMENT BASED CRASH RATE STATISTICS  
 DISTRICT: ALL COUNTY: ALL FOR 2012  
 USERID: KN028CD

PAGE NO 25  
 AS OF: 2014-01-30

COMMENT:

CC - CRASH RATE CATEGORY	CODE	DESCRIPTIONS	AVG/YEAR	\$/CRASH@CRA	C-NO-INJ	C-POSSIBLE	C-N-INCAP	C-INCAP	C-FATAL	C-NT-FATAL	
I/A CRASH	CRASHES	MV MILES	CRASH RATE	CL MILES	\$/CRASH@INJ	P-NO-INJ	P-POSSIBLE	P-N-INCAP	P-INCAP	P-FATAL	P-NT-FATAL
01 - INTERSTATE URBAN					169,847	11,154	4,005	2,677	967	152	14
179	18,790	25,886.653	0.732	789.014	174,882	35,808	7,257	3,757	1,311	169	17
02 - INTERSTATE RURAL					410,491	1,646	502	531	288	87	1
1	3,054	8,665.893	0.352	706.783	470,341	5,050	1,091	925	436	107	2
03 - TOLL ROAD URBAN					140,007	2,996	1,110	747	223	28	2
77	5,029	8,763.762	0.582	455.887	148,611	9,201	2,018	1,067	288	34	2
04 - TOLL ROAD RURAL					266,146	348	135	109	31	11	1
3	632	1,837.292	0.345	182.852	289,298	1,126	277	186	52	12	1
05 - URBAN OTHER LIMITED ACCESS					99,296	3,274	1,066	496	130	18	2
739	4,247	2,793.249	1.785	138.029	99,881	10,482	1,961	684	173	19	2
06 - RURAL OTHER LIMITED ACCESS					163,254	0	0	1	0	0	0
0	1	8.908	0.112	3.783	125,580	12	0	1	0	0	0
07 - RAMP URBAN					118,840	7,432	2,508	1,433	408	54	2
9,177	2,660	720.832	0.000	209.680	111,958	22,800	4,082	1,916	497	55	2
08 - RAMP RURAL					146,925	8,803	3,287	1,997	688	91	5
9,060	5,811	1,551.473	0.000	848.828	145,281	28,661	5,804	2,775	849	98	7
10 - URBAN 2-3LN 2WY DIVD RASD					110,208	457	170	100	34	2	0
361	402	164.710	4.632	43.112	104,946	1,678	280	139	41	2	0
11 - URBAN 2-3LN 2WY DIVD PAVD					138,799	1,118	462	316	88	10	2
558	1,438	520.628	3.833	126.666	130,641	4,279	787	419	103	10	2
12 - URBAN 2-3LN 2WY UNDIVD					109,184	739	246	204	53	3	1
311	935	481.803	2.586	203.087	98,553	2,615	400	253	59	3	1
13 - SUBURBAN 2-3LN 2WY DIVD RASD					235,027	254	117	61	34	6	1
114	359	198.225	2.386	49.848	241,588	953	193	90	42	7	1
14 - SUBURBAN 2-3LN 2WY DIVD PAVD					213,835	1,813	805	639	228	37	1
735	2,788	1,706.340	2.064	394.978	222,966	7,250	1,528	914	297	42	1
15 - SUBURBAN 2-3LN 2WY UNDIVD					301,725	1,498	619	537	209	55	1
261	2,658	3,347.158	0.872	1,136.132	320,023	5,851	1,279	765	300	62	1
16 - RURAL 2-3LN 2WY DIVD RASD					418,093	89	27	28	11	5	0
26	134	153.714	1.040	40.174	385,498	371	58	43	11	5	0

REPORT..CARPJ85-  
 DATE...03/03/2014  
 TIME...13:48:48

FLORIDA - DEPARTMENT OF TRANSPORTATION  
 C A R - CRASH ANALYSIS REPORTING SYSTEM  
 SEGMENT BASED CRASH RATE STATISTICS  
 DISTRICT: ALL COUNTY: ALL FOR 2012  
 USERID: KN028CD

PAGE NO 26  
 AS OF: 2014-01-30

COMMENT:

CC	I/A	CRASH	CRASHES	CODE	DESCRIPTIONS	AVG/YEAR	\$/CRASH@CRA	C-NO-INJ	C-POSSIBLE	C-N-INCAP	C-INCAP	C-FATAL	C-NT-FATAL
						CL MILES	\$/CRASH@INJ	P-NO-INJ	P-POSSIBLE	P-N-INCAP	P-INCAP	P-FATAL	P-NT-FATAL
17	-	RURAL	2-3LN	2WY	DIVD PAVD		346,119	421	231	177	103	19	0
		165	786		579.922	1.639	215.285	403,358	1,685	482	291	139	25
18	-	RURAL	2-3LN	2WY	UNDIVD		518,651	1,563	614	685	416	124	1
		253	3,150		5,502.525	0.618	3,857.790	572,260	4,943	1,255	1,095	603	148
20	-	URBAN	4-5LN	2WY	DIVD RASD		154,109	10,429	4,225	2,759	848	120	13
		3,200	15,194		6,950.068	2.646	868.719	150,045	40,001	7,206	3,760	1,052	126
21	-	URBAN	4-5LN	2WY	DIVD PAVD		114,942	10,902	3,783	2,314	648	68	5
		3,624	14,096		3,946.452	4.490	489.190	113,465	39,647	6,458	3,056	775	78
22	-	URBAN	4-5LN	2WY	UNDIVD		155,878	1,689	605	360	116	21	1
		406	2,386		555.441	5.026	95.093	145,788	6,153	972	471	132	22
23	-	SUBURBAN	4-5LN	2WY	DIVD RASD		234,271	6,278	3,155	2,251	907	152	6
		834	11,915		9,161.315	1.391	1,070.186	239,637	26,125	6,037	3,318	1,212	162
24	-	SUBURBAN	4-5LN	2WY	DIVD PAVD		229,074	966	419	254	88	24	3
		152	1,602		919.403	1.907	102.950	219,386	3,959	740	367	113	24
25	-	SUBURBAN	4-5LN	2WY	UNDIVD		271,741	30	13	21	5	1	0
		5	65		48.970	1.429	9.828	251,680	159	26	29	5	1
26	-	RURAL	4-5LN	2WY	DIVD RASD		445,833	929	422	424	249	61	5
		79	2,011		3,578.113	0.584	912.677	468,713	3,468	834	707	344	68
27	-	RURAL	4-5LN	2WY	DIVD PAVD		541,152	48	17	22	13	4	0
		1	103		259.307	0.401	75.471	612,920	142	34	27	20	5
28	-	RURAL	4-5LN	2WY	UNDIVD		0	0	0	0	0	0	0
		0	0		0.393	0.000	0.144	0	0	0	0	0	0
30	-	URBAN	6+LN	2WY	DIVD RASD		133,441	28,083	11,376	6,487	1,952	245	10
		6,743	41,410		13,931.636	3.456	912.327	129,474	107,736	19,700	8,840	2,389	254
31	-	URBAN	6+LN	2WY	DIVD PAVD		162,860	2,038	786	475	171	26	0
		518	2,978		871.638	4.010	63.895	166,000	7,926	1,398	642	227	29
32	-	URBAN	6+LN	2WY	UNDIVD		63,440	45	7	8	2	0	0
		10	52		1.559	39.769	0.305	44,017	142	7	8	2	0
33	-	SUBURBAN	6+LN	2WY	DIVD RASD		172,483	5,299	2,828	1,510	561	75	5
		815	9,463		4,982.078	2.062	312.533	177,880	22,518	5,015	2,128	736	84

REPORT..CARPJ85-  
 DATE...03/03/2014  
 TIME...13:48:48

FLORIDA - DEPARTMENT OF TRANSPORTATION  
 C A R - CRASH ANALYSIS REPORTING SYSTEM  
 SEGMENT BASED CRASH RATE STATISTICS  
 DISTRICT: ALL COUNTY: ALL FOR 2012  
 USERID: KN028CD

PAGE NO 27  
 AS OF: 2014-01-30

COMMENT:

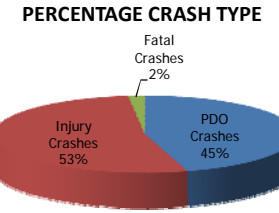
CC - CRASH RATE CATEGORY	DESCRIPTIONS	AVG/YEAR	\$/CRASH@CRA	C-NO-INJ	C-POSSIBLE	C-N-INCAP	C-INCAP	C-FATAL	C-NT-FATAL
I/A CRASH	CRASHES	CL MILES	\$/CRASH@INJ	P-NO-INJ	P-POSSIBLE	P-N-INCAP	P-INCAP	P-FATAL	P-NT-FATAL
34 - SUBURBAN 6+LN 2WY DIVD PAVD			206,978	170	60	40	5	4	0
11	268	174.093	234,385	588	95	53	11	5	0
35 - SUBURBAN 6+LN 2WY UNDIVD			53,072	2	2	0	0	0	0
0	4	0.000	33,215	10	2	0	0	0	0
36 - RURAL 6+LN 2WY DIVD RASD			371,521	35	19	15	4	2	0
4	71	55.530	347,923	184	45	19	4	2	0
37 - RURAL 6+LN 2WY DIVD PAVD			99,645	0	1	0	0	0	0
0	1	16.403	66,430	0	1	0	0	0	0
38 - RURAL 6+LN 2WY UNDIVD			0	0	0	0	0	0	0
0	0	0.000	0	0	0	0	0	0	0
40 - URBAN ONE WAY			101,268	4,102	1,085	625	187	22	4
1,644	4,381	749.260	94,849	14,038	1,743	851	236	22	6
41 - SUBURBAN ONE WAY			102,155	723	194	116	32	4	0
280	789	379.951	99,839	2,301	312	142	36	5	0
42 - RURAL ONE WAY			147,646	81	31	24	4	1	0
101	40	16.652	133,479	294	46	28	5	1	0
77 - UNDEFINED			145,172	923	290	171	59	10	2
1,064	391	0.000	148,762	3,048	499	219	74	12	4
ALL CRASH RATE CATEGORIES			175,344	93,608	37,152	23,992	8,330	1,379	77
4,444	160,094	109,481.349	177,467	342,036	65,789	33,609	10,820	1,516	100



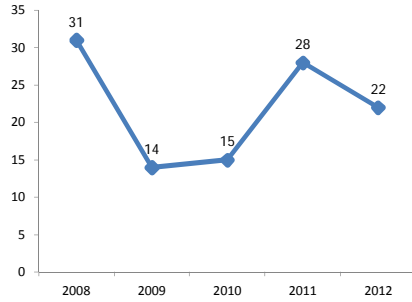
# 5-Year Crash Analysis SR 514 (Malabar Road) From SR 507 (Babcock Street) to US 1 (MP 3.060 to MP 6.698 )

TOTAL NUMBER OF CRASHES												
	2008		2009		2010		2011		2012		Total	
	#	%	#	%	#	%	#	%	#	%	#	%
Property Damage Only (PDO) Crashes	14	45%	5	0%	9	0%	10	36%	12	55%	50	45.5
Injury Crashes	16	52%	9	0%	6	0%	17	61%	10	45%	58	52.7
Fatal Crashes	1	3%	0	0%	0	0%	1	4%	0	0%	2	1.8
<b>Total</b>	<b>31</b>	<b>28%</b>	<b>14</b>	<b>13%</b>	<b>15</b>	<b>0%</b>	<b>28</b>	<b>25%</b>	<b>22</b>	<b>20%</b>	<b>110</b>	
<b>Increase/Decrease</b>				<b>-121%</b>		<b>7%</b>		<b>46%</b>		<b>-27%</b>		

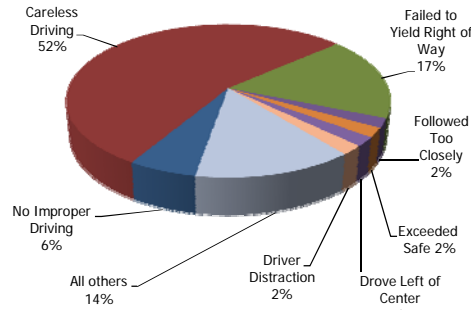
NUMBER OF VEHICLES INVOLVED						
	2008	2009	2010	2011	2012	Total
<b>FATAL CRASHES</b>	1	0	0	1	0	2
Fatalities	1	0	0	1	0	2
Injuries	0	0	0	1	0	1
<b>INJURY CRASHES</b>	16	9	6	17	10	58
Injuries	24	19	13	25	14	95
<b>TOTAL # OF INJURED PEOPLE</b>	24	19	13	26	14	96
<b>TOTAL # OF VEH INVOLVED</b>	64	29	26	52	37	208
<b>INJURED + FATAL (TOTAL INVOLVED)</b>	25	19	13	27	14	98
<b>TOTAL PDO</b>	14	5	9	10	12	50



### TOTAL NUMBER OF CRASHES



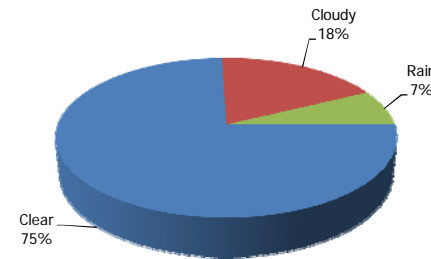
### CONTRIBUTING CAUSE



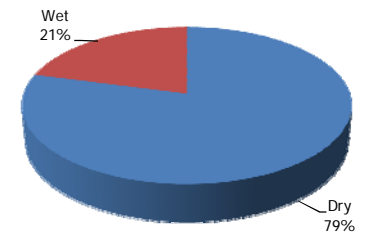
FIRST HARMFUL EVENT												
	2008		2009		2010		2011		2012		Total	
	#	%	#	%	#	%	#	%	#	%	#	%
Coll Rear End	13	42%	6	43%	5	33%	8	31%	10	45%	42	38.9
Coll Head On							1	4%	1	5%	2	1.9
Coll Angle	3	10%	3	21%	3	20%	7	27%	2	9%	18	16.7
Coll Left Turn	2	6%	1	7%	1	7%					4	3.7
Coll Right Turn	1	3%	1	7%							2	1.9
Coll Sideswipe	1	3%									1	0.9
Coll Backed Into	1	3%									1	0.9
Coll Parked Car												
Coll MV on Roadway					1	4%	1	5%	2	9%	2	1.9
Coll w/ Pedestrian	1	3%							1	5%	2	1.9
Coll w/ Bicycle												
Coll w/ Bicycle (Bike Lane)												
Coll w/ Moped												
Coll w/ Train												
Coll w/ Animal									1	5%	1	0.9
MV Hit Sign/Sign Post												
MV Hit Utility Pole/Light Pole					2	13%	1	4%	2	9%	5	4.6
MV Hit Guardrail									1	5%	1	0.9
MV Hit Fence	1	3%									1	0.9
MV Hit Concrete Barrier Wall												
MV Hit Bridge/Pier/Abutment/Rail												
MV Hit Tree/Shrubbery	2	6%									2	1.9
Coll Const Barricade Sign												
Coll w/ Traffic Gate												
Coll w/ Crash Attenuators												
Coll w/ Fixed Objects Above Road												
MV Hit Other Fixed Objects												
Coll w/ Moveable Object on Road												
MV Ran Into Ditch/Culvert	2	6%	1	7%	2	13%	3	12%	2	9%	10	9.3
Ran Off Road Into Water												
Overtuned							3	12%			3	2.8
Occupant Fell From Veh												
Tractor/Trailer Jackknifed												
Fire												
Explosion												
Downhill Runaway												
Cargo Loss or Shift	1	3%									1	0.9
Separation of Units			1	7%							1	0.9
Median Crossover												
All other	3	10%	1	7%	2	13%	2	8%	1	5%	9	8.3
<b>Total</b>	<b>31</b>	<b>29%</b>	<b>14</b>	<b>0%</b>	<b>15</b>	<b>0%</b>	<b>26</b>	<b>24%</b>	<b>22</b>	<b>20%</b>	<b>108</b>	

CONTRIBUTING CAUSE												
	2008		2009		2010		2011		2012		Total	
	#	%	#	%	#	%	#	%	#	%	#	%
No Improper Driving			1	7%			2	8%	3	14%	6	5.6
Careless Driving	16	52%	9	64%	9	60%	13	50%	9	41%	56	51.9
Failed to Yield Right of Way	3	10%	3	21%	5	33%	5	19%	2	9%	18	16.7
Improper Parking	1	3%									1	0.9
Improper Lane Change												
Improper Turn	1	3%									1	0.9
Alcohol-Under Influence												
Drugs - Under Influence												
Alcohol/Drugs												
Followed Too Closely							1	4%	1	5%	2	1.9
Disregarded Traffic Signal												
Exceeded Safe Speed							1	4%	1	5%	2	1.9
Disregarded Stop Sign	1	3%									1	0.9
Failed to Maintain Equip												
Improper Passing	1	3%									1	0.9
Drove Left of Center	2	6%									2	1.9
Exceeded Stated Speed Limit												
Obstructing Traffic												
Improper Load	1	3%									1	0.9
Disregarded Other Traffic Control									1	5%	1	0.9
Driving Wrong Side/Way												
Fleeing Police												
Vehicle Modified												
Driver Distraction	1	3%					1	7%			2	1.9
All others	4	13%	1	7%			4	15%	5	23%	14	13.0
<b>Total</b>	<b>31</b>	<b>29%</b>	<b>14</b>	<b>0%</b>	<b>15</b>	<b>0%</b>	<b>26</b>	<b>24%</b>	<b>22</b>	<b>20%</b>	<b>108</b>	

### WEATHER



### ROAD SURFACE CONDITION



ROAD SIDE												
	2008		2009		2010		2011		2012		Total	
	#	%	#	%	#	%	#	%	#	%	#	%
Left	10	32%	8	57%	5	33%	11	39%	7	32%	41	37.3
Right	21	68%	6	43%	9	60%	16	57%	12	55%	64	58.2
Intersection												
Middle/Median												
Left side-road					1	7%	1	4%	2	9%	4	3.6
Right side-road									1	5%	1	0.9
End of State Road												
All Other												
<b>Total</b>	<b>31</b>	<b>28%</b>	<b>14</b>	<b>13%</b>	<b>15</b>	<b>14%</b>	<b>28</b>	<b>25%</b>	<b>22</b>	<b>20%</b>	<b>110</b>	

ACCIDENT LANE NUMBER												
	2008		2009		2010		2011		2012		Total	
	#	%	#	%	#	%	#	%	#	%	#	%
Acceleration/Merge lane												
Toll Plaza												
Painted Crosswalk												
End of State Road												
Island Area	1	3%									1	0.9
Service/Access Road												
Left Turn Lane					1	7%	1	4%	1	5%	3	2.7
Median/Middle												
Parking Lane												
Right Turn Lane	1	3%			3	20%	1	4%	1	5%	6	5.5
Side of the Road/Shoulder	10	32%	2	14%	4	27%	7	25%	6	27%	29	26.4
Continuous Turn Lane (Center)												
Unknown					2	13%					2	1.8
Bicycle Lane												
Ramp												
1: Thru-Lanes (numbered from center outward)	17	55%	12	86%	5	33%	19	68%	13	59%	66	60.0
2: Thru-Lanes (numbered from center outward)	1	3%									1	0.9
3: Thru-Lanes (numbered from center outward)	1	3%							1	5%	2	1.8
4: Thru-Lanes (numbered from center outward)												
5: Thru-Lanes (numbered from center outward)												
All Other												
<b>Total</b>	<b>31</b>	<b>28%</b>	<b>14</b>	<b>13%</b>	<b>15</b>	<b>14%</b>	<b>28</b>	<b>25%</b>	<b>22</b>	<b>20%</b>	<b>110</b>	

ROAD CONDITION AT TIME OF CRASH												
	2008		2009		2010		2011		2012		Total	
	#	%	#	%	#	%	#	%	#	%	#	%
No Defects	30	97%	13	93%	15	100%	28	100%	20	91%	106	96.4
Obstruction with Warning												
Obstruction without Warning												
Road Under Repair/Construction	1	3%							1	5%	2	1.8
Loose Surface Materials												
Shoulders Soft/Low/High												
Holes/Ruts/Unsafe Paved Edge												
Standing Water			1	7%					1	5%	2	1.8
Worn / Polished Road Surface												
All Others												
<b>Total</b>	<b>31</b>	<b>28%</b>	<b>14</b>	<b>13%</b>	<b>15</b>	<b>14%</b>	<b>28</b>	<b>25%</b>	<b>22</b>	<b>20%</b>	<b>110</b>	

ROAD SURFACE CONDITION												
	2008		2009		2010		2011		2012		Total	
	#	%	#	%	#	%	#	%	#	%	#	%
Dry	21	68%	11	79%	13	87%	25	89%	17	77%	87	79.1
Wet	10	32%	3	21%	2	13%	3	11%	5	23%	23	20.9
Slippery												
Icy												
All Other												
<b>Total</b>	<b>31</b>	<b>28%</b>	<b>14</b>	<b>13%</b>	<b>15</b>	<b>14%</b>	<b>28</b>	<b>25%</b>	<b>22</b>	<b>20%</b>	<b>110</b>	

POINT OF IMPACT												
	2008		2009		2010		2011		2012		Total	
	#	%	#	%	#	%	#	%	#	%	#	%
Front End	15	48%	6	43%	9	60%	14	54%	10	45%	54	50.0
Right Front End	1	3%			2	13%	1	4%	4	18%	8	7.4
Right Front Qtr Panel			1	7%			2	8%	2	9%	5	4.6
Right Front Door	2	6%			2	13%	1	4%			5	4.6
Right Rear Door							1	4%			1	0.9
Right Rear Qtr Panel												
Right Rear Corner	1	3%									1	0.9
Rear End												
Left Rear Corner												
Left Rear Qtr Panel	2	6%							1	5%	3	2.8
Left Rear Door									1	5%	1	0.9
Left Front Door							1	4%			1	0.9
Left Front Qtr Panel			1	7%			1	4%	1	5%	3	2.8
Left Front Corner	6	19%	4	29%	1	7%	2	8%	2	9%	15	13.9
Hood												
Roof												
Trunk												
Undercarriage												
Overturn	1	3%					3	12%			4	3.7
Windshield												
Trailer			1	7%							1	0.9
Unknown/Other	3	10%	1	7%	1	7%			1	5%	6	5.6
<b>Total</b>	<b>31</b>	<b>29%</b>	<b>14</b>	<b>13%</b>	<b>15</b>	<b>14%</b>	<b>26</b>	<b>24%</b>	<b>22</b>	<b>20%</b>	<b>108</b>	

SITE LOCATION												
	2008		2009		2010		2011		2012		Total	
	#	%	#	%	#	%	#	%	#	%	#	%
Not At Intersection / RR X-rinq / Bridge	15	48%	7	50%	3	20%	8	29%	7	32%	40	36.4
At Intersection	14	45%	7	50%	5	33%	11	39%	11	50%	48	43.6
Influenced By Intersection	1	3%			5	33%	6	21%	3	14%	15	13.6
Driveway Access	1	3%							1	5%	2	1.8
Railroad					1	7%	3	11%	1	5%	5	4.6
Bridge					1	7%					1	0.9
Entrance Ramp												
Exit Ramp												
Parking Lot-Public												
Parking Lot-Private												
Private Property												
Toll-Booth												
Public Bus Stop Zone												
All Other												
<b>Total</b>	<b>31</b>	<b>28%</b>	<b>14</b>	<b>13%</b>	<b>15</b>	<b>14%</b>	<b>28</b>	<b>25%</b>	<b>22</b>	<b>20%</b>	<b>110</b>	

VEHICLE INVOLVEMENT												
	2008		2009		2010		2011		2012		Total	
	#	%	#	%	#	%	#	%	#	%	#	%
1 Veh Crash	7	23%	2	14%	5	33%	9	32%	7	32%	30	27.3
2 Veh Crash	17	55%	9	64%	9	60%	15	54%	15	68%	65	59.1
3 Veh Crash	5	16%	3	21%	1	7%	3	11%			12	10.9
4+ Veh Crash	2	6%					1	4%			3	2.7
<b>Total</b>	<b>31</b>	<b>28%</b>	<b>14</b>	<b>13%</b>	<b>15</b>	<b>14%</b>	<b>28</b>	<b>25%</b>	<b>22</b>	<b>20%</b>	<b>110</b>	

VEHICLE USE												
	2008		2009		2010		2011		2012		Total	
	#	%	#	%	#	%	#	%	#	%	#	%
Private Transportation	29	94%	14	100%	15	100%	26	100%	19	86%	103	95.4
Commercial Passengers												
Commercial Cargo	2	6%									2	1.9
Public Transportation												
Public School Bus												
Private School Bus												
Ambulance												
Law Enforcement									1	5%	1	0.9
Fire/Rescue												
Military												
Other Government												
Dump												
Concrete Mixer												
Gargabe or Refuse												
Cargo Van												
Other									2	9%	2	1.9
<b>Total</b>	<b>31</b>	<b>29%</b>	<b>14</b>	<b>13%</b>	<b>15</b>	<b>14%</b>	<b>26</b>	<b>24%</b>	<b>22</b>	<b>20%</b>	<b>108</b>	

VEHICLE TYPE												
	2008		2009		2010		2011		2012		Total	
	#	%	#	%	#	%	#	%	#	%	#	%
Automobile	16	52%	7	50%	9	60%	12	46%	12	55%	56	51.9
Van	2	6%	2	14%	1	7%	1	4%			6	5.6
Light Truck/ P.U. - 2 or 4 rear tires	10	32%	4	29%	5	33%	6	23%	9	41%	34	31.5
Medium Truck - 4 rear tires	1	3%									1	0.9
Heavy Truck - 2 or more rear axles	1	3%									1	0.9
Truck Tractor (Cab-Boat)												
Motor Home (RV)												
Bus (driver + seats for 9 - 15)												
Bus (driver + seats over 15)												
Bicycle												
Motorcycle	1	3%	1	7%			6	23%	1	5%	9	8.3
Moped												
All Terrain Vehicle												
Train												
Low Speed Vehicle												
Other												
<b>Total</b>	<b>31</b>	<b>29%</b>	<b>14</b>	<b>13%</b>	<b>15</b>	<b>14%</b>	<b>26</b>	<b>24%</b>	<b>22</b>	<b>20%</b>	<b>108</b>	

VEHICLE MOVEMENT												
	2008		2009		2010		2011		2012		Total	
	#	%	#	%	#	%	#	%	#	%	#	%
Straight Ahead	21	68%	10	71%	9	60%	18	69%	16	73%	74	68.5
Slowing / Stopped / Stalled	2	6%					1	4%	2	9%	5	4.6
Making Left Turn	3	10%	3	21%	6	40%	4	15%	1	5%	17	15.7
Backing	1	3%									1	0.9
Making Right Turn	1	3%	1	7%			3	12%			5	4.6
Changing Lanes	1	3%							1	5%	2	1.9
Entering / Leaving Parking Space												
Property Parked												
Improperly Parked												
Making U-Turn												
Passing	2	6%									2	1.9
Driverless or Runaway Vehicle												
All Other									2	9%	2	1.9
<b>Total</b>	<b>31</b>	<b>29%</b>	<b>14</b>	<b>13%</b>	<b>15</b>	<b>14%</b>	<b>26</b>	<b>24%</b>	<b>22</b>	<b>20%</b>	<b>108</b>	

VEHICLE DIRECTION												
	2008		2009		2010		2011		2012		Total	
	#	%	#	%	#	%	#	%	#	%	#	%
North	4	13%			1	7%	1	4%	1	5%	7	6.4
South	1	3%	2	14%	3	20%	2	7%	1	5%	9	8.2
East	16	52%	5	36%	8	53%	9	32%	12	55%	50	45.5
West	10	32%	7	50%	3	20%	14	50%	8	36%	42	38.2
Unknown							2	7%			2	1.8
<b>Total</b>	<b>31</b>	<b>28%</b>	<b>14</b>	<b>13%</b>	<b>15</b>	<b>14%</b>	<b>28</b>	<b>25%</b>	<b>22</b>	<b>20%</b>	<b>110</b>	

WEATHER												
	2008		2009		2010		2011		2012		Total	
	#	%	#	%	#	%	#	%	#	%	#	%
Clear	19	61%	10	71%	13	87%	24	86%	16	73%	82	74.5
Cloudy	10	32%	2	14%	2	13%	4	14%	2	9%	20	18.2
Rain	2	6%	2	14%					4	18%	8	7.3
Fog												
All Other												
<b>Total</b>	<b>31</b>	<b>28%</b>	<b>14</b>	<b>13%</b>	<b>15</b>	<b>14%</b>	<b>28</b>	<b>25%</b>	<b>22</b>	<b>20%</b>	<b>110</b>	

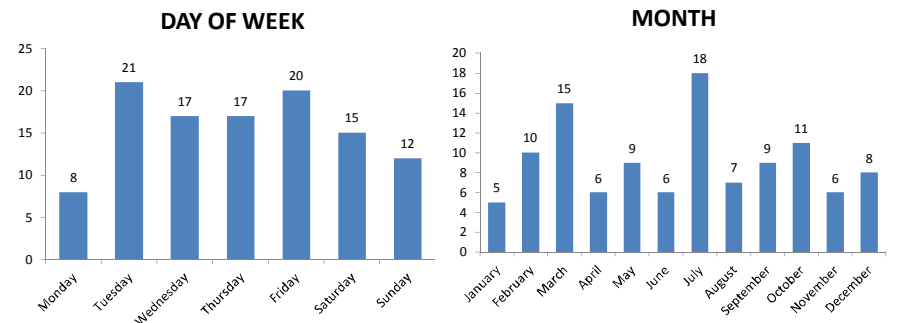
TIME OF DAY												
	2008		2009		2010		2011		2012		Total	
	#	%	#	%	#	%	#	%	#	%	#	%
1:00 AM			1	7%							1	0.9
2:00 AM	1	3%	1	7%			1	4%	1	5%	4	3.6
3:00 AM												
4:00 AM	1	3%					1	4%			2	1.8
5:00 AM	1	3%			1	7%	1	4%			3	2.7
6:00 AM	1	3%					1	4%	2	9%	4	3.6
7:00 AM	1	3%	1	7%	3	20%	3	11%	1	5%	9	8.2
8:00 AM	3	10%			1	7%	2	7%	2	9%	8	7.3
9:00 AM			2	14%					1	5%	3	2.7
10:00 AM												
11:00 AM	1	3%			2	13%	4	14%	1	5%	8	7.3
12:00 PM	1	3%					1	4%			2	1.8
1:00 PM			1	7%			2	7%	1	5%	4	3.6
2:00 PM	5	16%	1	7%			1	4%			7	6.4
3:00 PM	1	3%			1	7%	3	11%	2	9%	7	6.4
4:00 PM	5	16%	1	7%	1	7%	3	11%	2	9%	12	10.9
5:00 PM	4	13%	2	14%			1	4%	3	14%	10	9.1
6:00 PM	1	3%	2	14%	1	7%	1	4%	1	5%	6	5.5
7:00 PM	2	6%	1	7%	1	7%	1	4%	1	5%	6	5.5
8:00 PM							1	4%			1	0.9
9:00 PM	1	3%	1	7%	2	13%					4	3.6
10:00 PM	1	3%							1	5%	2	1.8
11:00 PM					1	7%	1	4%	3	14%	5	4.5
12:00 AM	1	3%			1	7%					2	1.8
<b>Total</b>	<b>31</b>	<b>28%</b>	<b>14</b>	<b>13%</b>	<b>15</b>	<b>14%</b>	<b>28</b>	<b>25%</b>	<b>22</b>	<b>20%</b>	<b>110</b>	


LIGHTING												
	2008		2009		2010		2011		2012		Total	
	#	%	#	%	#	%	#	%	#	%	#	%
Daylight	23	74%	9	64%	8	53%	21	75%	15	68%	76	69.1
Dusk	1	3%					2	7%			3	2.7
Dawn					2	13%	2	7%	1	5%	5	4.5
Dark (Street Light)	4	13%	3	21%	3	20%			5	23%	15	13.6
Dark (No Street Light)	3	10%	2	14%	2	13%	3	11%	1	5%	11	10.0
Unknown												
<b>Total</b>	<b>31</b>	<b>28%</b>	<b>14</b>	<b>13%</b>	<b>15</b>	<b>14%</b>	<b>28</b>	<b>25%</b>	<b>22</b>	<b>20%</b>	<b>110</b>	

MONTH												
	2008		2009		2010		2011		2012		Total	
	#	%	#	%	#	%	#	%	#	%	#	%
January	2	6%	1	7%			1	4%	1	5%	5	4.5
February	5	16%	3	21%			2	7%			10	9.1
March	4	13%	2	14%	5	33%	2	7%	2	9%	15	13.6
April	2	6%	2	14%	2	13%					6	5.5
May	2	6%	1	7%	2	13%	2	7%	2	9%	9	8.2
June	1	3%			1	7%	2	7%	2	9%	6	5.5
July	6	19%			2	13%	2	7%	3	14%	18	16.4
August			2	14%			4	14%	1	5%	7	6.4
September	3	10%					2	7%	4	18%	9	8.2
October	1	3%	2	14%	2	13%	4	14%	2	9%	11	10.0
November	3	10%					1	4%	2	9%	6	5.5
December	2	6%	1	7%	1	7%	1	4%	3	14%	8	7.3
<b>Total</b>	<b>31</b>	<b>28%</b>	<b>14</b>	<b>13%</b>	<b>15</b>	<b>14%</b>	<b>28</b>	<b>25%</b>	<b>22</b>	<b>20%</b>	<b>110</b>	

AGE												
	2008		2009		2010		2011		2012		Total	
	#	%	#	%	#	%	#	%	#	%	#	%
16-25	7	23%	5	36%	7	47%	6	23%	6	27%	31	28.7
26-40	9	29%	2	14%	1	7%	7	27%	4	18%	23	21.3
41-65	9	29%	4	29%	3	20%	12	46%	7	32%	35	32.4
Over 65	1	3%	3	21%	2	13%	1	4%	4	18%	11	10.2
Unknown or Other	5	16%			2	13%			1	5%	8	7.4
<b>Total</b>	<b>31</b>	<b>29%</b>	<b>14</b>	<b>13%</b>	<b>15</b>	<b>14%</b>	<b>26</b>	<b>24%</b>	<b>22</b>	<b>20%</b>	<b>108</b>	

ALCOHOL/DRUGS INVOLVEMENT												
	2008		2009		2010		2011		2012		Total	
	#	%	#	%	#	%	#	%	#	%	#	%
None	27	87%	11	79%	14	93%	25	89%	20	91%	97	88.2
Alcohol Involved	4	13%	3	21%	1	7%	2	7%	2	9%	12	10.9
Drugs Involved												
Alcohol and Drugs Involved							1	4%			1	0.9
Undetermined												
<b>Total</b>	<b>31</b>	<b>28%</b>	<b>14</b>	<b>13%</b>	<b>15</b>	<b>14%</b>	<b>28</b>	<b>25%</b>	<b>22</b>	<b>20%</b>	<b>110</b>	



Site Information	
Feature	1
Site	700379
Description	ON SR-514, 0.463 MI. E OF SR-507 (UVL)
Section	70180000
Milepoint	3.568
AADT	<b>18500</b>
Site Type	Portable
Class Data	No
K Factor	9
D Factor	54.2
T Factor	6.7
TRAFFIC REPORTS (provided in  format)	
Brevard County	<a href="#">Annual Average Daily Traffic</a>
	<a href="#">Historical AADT Data</a>
	<a href="#">Synopsis 700379-20130813</a>


Print this window.

Close this window.

COUNTY: 70  
 STATION: 0379  
 DESCRIPTION: ON SR-514, 0.463 MI. E OF SR-507 (UVL)  
 START DATE: 08/13/2013  
 START TIME: 1200

TIME	DIRECTION: E					DIRECTION: W					COMBINED TOTAL	
	1ST	2ND	3RD	4TH	TOTAL	1ST	2ND	3RD	4TH	TOTAL		
0000	14	12	10	10	46	17	13	17	9	56	102	
0100	7	13	6	5	31	15	8	13	11	47	78	
0200	18	5	5	5	33	12	6	8	4	30	63	
0300	2	2	4	9	17	9	4	4	6	23	40	
0400	6	7	13	13	39	8	6	14	8	36	75	
0500	16	19	27	38	100	11	23	31	35	100	200	
0600	37	76	129	167	409	44	56	74	85	259	668	
0700	137	138	178	207	660	125	144	166	162	597	1257	
0800	224	179	185	167	755	152	147	109	145	553	1308	
0900	156	138	136	153	583	124	130	123	148	525	1108	
1000	108	139	140	115	502	134	136	134	132	536	1038	
1100	107	112	114	124	457	143	130	115	143	531	988	
1200	125	123	121	118	487	149	146	149	166	610	1097	
1300	143	131	124	130	528	129	114	146	154	543	1071	
1400	132	127	149	141	549	132	153	152	121	558	1107	
1500	123	128	135	170	556	166	155	156	186	663	1219	
1600	152	167	151	145	615	224	170	183	212	789	1404	
1700	127	174	147	141	589	223	234	189	186	832	1421	
1800	143	137	146	126	552	183	151	134	119	587	1139	
1900	113	103	77	86	379	132	113	126	99	470	849	
2000	90	63	64	63	280	90	86	72	63	311	591	
2100	49	55	46	66	216	64	45	42	38	189	405	
2200	54	29	32	36	151	37	44	29	27	137	288	
2300	23	25	19	21	88	31	31	27	19	108	196	
24-HOUR TOTALS:					8622						9090	17712

	DIRECTION: E		DIRECTION: W		COMBINED DIRECTIONS	
	HOUR	VOLUME	HOUR	VOLUME	HOUR	VOLUME
A.M.	745	795	730	627	730	1415
P.M.	1545	640	1645	858	1645	1451
DAILY	745	795	1645	858	1645	1451

Site Information	
Feature	1
Site	700127
Description	ON SR-514, 1.097 MI. W OF SR-5 (US-1) (U VL)
Section	70180000
Milepoint	5.642
AADT	<b>10600</b>
Site Type	Portable
Class Data	No
K Factor	9
D Factor	54.2
T Factor	6.7
TRAFFIC REPORTS (provided in  format)	
Brevard County	<a href="#">Annual Average Daily Traffic</a>
	<a href="#">Historical AADT Data</a>
	<a href="#">Synopsis 700127-20130813</a>


Print this window.

Close this window.

COUNTY: 70  
 STATION: 0127  
 DESCRIPTION: ON SR-514, 1.097 MI. W OF SR-5 (US-1) (UVL)  
 START DATE: 08/13/2013  
 START TIME: 1330

TIME	DIRECTION: E					DIRECTION: W					COMBINED TOTAL	
	1ST	2ND	3RD	4TH	TOTAL	1ST	2ND	3RD	4TH	TOTAL		
0000	8	13	11	13	45	10	6	6	5	27	72	
0100	3	12	5	9	29	3	6	3	3	15	44	
0200	4	2	5	3	14	4	1	3	1	9	23	
0300	8	0	6	2	16	1	1	5	5	12	28	
0400	6	5	7	5	23	5	7	10	11	33	56	
0500	9	15	18	23	65	16	16	33	29	94	159	
0600	23	49	48	57	177	37	61	105	109	312	489	
0700	70	53	68	76	267	109	133	164	153	559	826	
0800	60	64	56	73	253	176	124	120	115	535	788	
0900	54	78	59	58	249	84	81	86	81	332	581	
1000	68	48	64	61	241	69	81	97	66	313	554	
1100	63	69	53	75	260	64	58	77	74	273	533	
1200	65	62	72	89	288	72	57	80	71	280	568	
1300	74	68	71	57	270	76	82	78	80	316	586	
1400	80	96	59	74	309	78	66	79	73	296	605	
1500	75	77	99	104	355	75	89	82	98	344	699	
1600	94	107	129	116	446	77	99	91	83	350	796	
1700	116	117	129	83	445	81	100	75	88	344	789	
1800	95	83	90	79	347	88	76	64	68	296	643	
1900	64	71	58	45	238	58	58	51	55	222	460	
2000	64	48	41	44	197	37	27	38	29	131	328	
2100	51	33	22	28	134	35	25	32	33	125	259	
2200	27	24	24	23	98	24	22	20	17	83	181	
2300	25	21	13	16	75	17	8	12	11	48	123	
24-HOUR TOTALS:					4841						5349	10190

	DIRECTION: E		DIRECTION: W		COMBINED DIRECTIONS	
	HOUR	VOLUME	HOUR	VOLUME	HOUR	VOLUME
A.M.	730	268	715	626	730	885
P.M.	1630	478	1545	365	1630	833
DAILY	1630	478	715	626	730	885

Site Information	
Feature	1
Site	701001
Description	ON SR-514, 0.119 MI. W OF US-1 (UCLP)
Section	70180000
Milepoint	6.623
AADT	<b>11800</b>
Site Type	Portable
Class Data	Yes
K Factor	9
D Factor	54.2
T Factor	5.6
TRAFFIC REPORTS (provided in  format)	
Brevard County	<a href="#">Annual Average Daily Traffic</a>
	<a href="#">Annual Vehicle Classification</a>
	<a href="#">Historical AADT Data</a>
	<a href="#">Synopsis 701001CL-20130813</a>
	<a href="#">Vehicle Class History</a>

Print this window.

Close this window.



COUNTY: 70  
 STATION: 1001  
 DESCRIPTION: ON SR-514, 0.119 MI. W OF US-1 (UCLP)  
 START DATE: 08/13/2013  
 START TIME: 1315

TIME	DIRECTION: E					DIRECTION: W					COMBINED TOTAL
	1ST	2ND	3RD	4TH	TOTAL	1ST	2ND	3RD	4TH	TOTAL	
0000	9	8	7	4	28	9	14	10	13	46	74
0100	2	6	2	3	13	7	12	8	6	33	46
0200	3	1	3	1	8	4	3	4	4	15	23
0300	1	0	6	5	12	7	1	5	3	16	28
0400	4	9	12	10	35	6	5	6	6	23	58
0500	19	15	32	33	99	11	17	16	21	65	164
0600	40	63	116	116	335	28	53	55	55	191	526
0700	106	143	155	180	584	74	66	78	102	320	904
0800	180	127	129	117	553	74	65	76	65	280	833
0900	87	92	88	79	346	72	89	90	67	318	664
1000	74	79	95	77	325	77	68	62	76	283	608
1100	64	62	71	80	277	69	73	78	77	297	574
1200	65	65	94	70	294	80	74	92	93	339	633
1300	89	84	71	79	323	91	94	97	65	347	670
1400	73	70	85	72	300	97	111	79	100	387	687
1500	72	85	83	95	335	105	100	118	130	453	788
1600	79	95	98	88	360	139	127	178	160	604	964
1700	81	92	81	86	340	188	180	172	152	692	1032
1800	88	83	74	64	309	137	90	102	88	417	726
1900	67	59	56	51	233	67	74	65	57	263	496
2000	46	25	35	29	135	60	55	45	42	202	337
2100	36	24	31	30	121	52	36	38	21	147	268
2200	23	23	24	13	83	30	20	24	23	97	180
2300	19	9	12	11	51	23	21	16	16	76	127

24-HOUR TOTALS: 5499 5911 11410

	DIRECTION: E		DIRECTION: W		COMBINED DIRECTIONS	
	HOUR	VOLUME	HOUR	VOLUME	HOUR	VOLUME
A.M.	715	658	700	320	715	978
P.M.	1545	367	1630	706	1630	1065
DAILY	715	658	1630	706	1630	1065

TRUCK PERCENTAGE 5.49 5.77 5.64

CLASSIFICATION SUMMARY DATABASE

DIR	1	2	3	4	5	6	7	8	9	10	11	12	13	14	15	TOTTRK	TOTVOL
E	56	3999	1142	25	182	35	0	36	24	0	0	0	0	0	0	302	5499
W	33	4495	1042	27	205	31	4	43	31	0	0	0	0	0	0	341	5911

REPORT..CARPJ85-  
DATE...03/03/2014  
TIME...13:48:48

FLORIDA - DEPARTMENT OF TRANSPORTATION  
C A R - CRASH ANALYSIS REPORTING SYSTEM  
SEGMENT BASED CRASH RATE STATISTICS

PAGE NO 0  
AS OF: 2014-01-30

COMMENT: USERID: KN028CD

=====  
CC - CRASH RATE CATEGORY CODE DESCRIPTIONS AVG/YEAR \$/CRASH@CRA C-NO-INJ C-POSSIBLE C-N-INCAP C-INCAP C-FATAL C-NT-FATAL  
I/A CRASH CRASHES MV MILES CRASH RATE CL MILES \$/CRASH@INJ P-NO-INJ P-POSSIBLE P-N-INCAP P-INCAP P-FATAL P-NT-FATAL  
=====

DETAIL PRINT LINE LEGEND - REFER TO SHORT TITLES IN THE HEADING LINES ABOVE

- CC - CRASH RATE CATEGORY CODE AND DESCRIPTION
- CRASHES - TOTAL NUMBER OF CRASHES
- I/A CRASH - TOTAL NUMBER OF "INLUENCE AREA" CRASHES
- MV MILES - MILLION VEHICLE MILES
- CRASH RATE - AVERAGE SEGMENT CRASH RATE
- CL MILES - ROADWAY CENTER LINE MILES
- \$ PER CRASH - AVERAGE ECONOMIC LOSS PER CRASH
- C-NO-INJ - CRASHES WITH PROPERTY DAMAGE ONLY
- C-POSSIBLE - CRASHES WITH POSSIBLE INJURIES
- C-N-INCAP - CRASHES WITH NON-INCAPACITATE INJURIES
- C-INCAP - CRASHES WITH INCAPACITATE INJURIES
- C-FATAL - CRASHES WITH FATALITIES
- C-NT-FATAL - CRASHES WITH NON-TRAFFIC FATALITIES
- \$ PER INJRY - AVERAGE ECONOMIC LOSS PER INJURY
- P-NO-INJ - PEOPLE WITH NO INJURIES
- P-POSS-INJ - PEOPLE WITH POSSIBLE INJURIES
- P-N-INCAP - PEOPLE WITH NON-INCAPACITATING INJURIES
- P-INCAP - PEOPLE WITH INCAPACITATING INJURIES
- P-FATAL - FATALITIES
- P-NT-FATAL - NON-TRAFFIC FATAILLITES

CURRENT BASE CALENDAR YEAR: 2012  
CARPJ81 CRASH EXTRACT DATE: 2014-01-30 21:00:10  
CARPJ82 FREEZE BREAK EXTRACT DATE: 2014-01-30 21:11:40  
CARPJ84 YEARLY ROLLUPS AND WEIGHTS DATE: 2014-01-30 21:12:21

CRASH DOLLAR VALUE WEIGHTS 1 THROUGH 6:	6,500	99,645	163,254	818,636	10,010,000	6,500
INJURY DOLLAR VALUE WEIGHTS 1 THROUGH 6:	0	66,430	125,580	629,720	9,100,000	0

AVAILABLE YEARS	2012	2011	2010	2009	2008
1 YEAR RATES	X	X	-	-	-
2 YEAR RATES	-	-	-	-	-
3 YEAR RATES	-	-	-	-	-
4 YEAR RATES	-	-	-	-	-
5 YEAR RATES	-	-	-	-	-

STATE WIDE: X STATE WIDE X BY DISTRICT \_ BY COUNTY

DISTRICTS: \_ \_ \_ \_ \_ BY DISTRICT \_ BY COUNTY

COUNTIES: \_ \_ \_ \_ \_



REPORT..CARPJ85-  
 DATE...03/03/2014  
 TIME...13:48:48

FLORIDA - DEPARTMENT OF TRANSPORTATION  
 C A R - CRASH ANALYSIS REPORTING SYSTEM  
 SEGMENT BASED CRASH RATE STATISTICS  
 DISTRICT: 05 COUNTY: ALL FOR 2012  
 USERID: KN028CD

PAGE NO 13  
 AS OF: 2014-01-30

COMMENT:

CC - CRASH RATE CATEGORY	CODE	DESCRIPTIONS	AVG/YEAR	\$/CRASH@CRA	C-NO-INJ	C-POSSIBLE	C-N-INCAP	C-INCAP	C-FATAL	C-NT-FATAL
I/A CRASH	CRASHES	MV MILES	CL MILES	\$/CRASH@INJ	P-NO-INJ	P-POSSIBLE	P-N-INCAP	P-INCAP	P-FATAL	P-NT-FATAL
01 - INTERSTATE URBAN				221,827	1,314	618	424	152	30	5
2	2,541	5,115.320	0.497	183.463	236,205	4,930	1,054	604	202	36
02 - INTERSTATE RURAL				422,969	324	84	107	68	17	0
0	600	1,538.361	0.390	95.706	433,669	1,122	180	176	99	18
03 - TOLL ROAD URBAN				126,675	236	95	116	10	2	0
8	451	1,377.742	0.333	95.534	120,100	741	168	145	12	2
04 - TOLL ROAD RURAL				364,095	57	17	27	3	3	0
2	105	310.533	0.344	29.777	368,048	193	38	41	7	3
05 - URBAN OTHER LIMITED ACCESS				620,602	22	9	3	4	2	0
1	39	108.244	0.369	14.106	582,127	58	14	3	6	2
06 - RURAL OTHER LIMITED ACCESS				0	0	0	0	0	0	0
0	0	0.000	0.000	0.000	0	0	0	0	0	0
07 - RAMP URBAN				182,440	343	172	105	28	6	1
604	51	3.369	0.000	15.368	169,985	1,203	252	138	36	6
08 - RAMP RURAL				187,413	1,186	627	421	117	21	2
1,382	992	204.756	0.000	200.868	182,382	4,486	999	578	149	22
10 - URBAN 2-3LN 2WY DIVD RASD				57,798	55	19	12	1	0	0
28	59	23.719	3.667	5.314	56,974	205	33	17	1	0
11 - URBAN 2-3LN 2WY DIVD PAVD				108,141	77	52	34	9	0	0
44	128	60.303	2.852	13.130	98,216	352	82	41	10	0
12 - URBAN 2-3LN 2WY UNDIVD				92,513	62	33	31	4	0	0
54	76	70.738	1.837	34.204	91,133	237	61	37	5	0
13 - SUBURBAN 2-3LN 2WY DIVD RASD				245,147	37	16	11	4	1	0
4	65	37.479	1.841	8.169	349,927	135	27	13	4	2
14 - SUBURBAN 2-3LN 2WY DIVD PAVD				235,311	175	108	75	36	4	0
67	331	317.955	1.251	70.734	235,052	785	205	121	45	4
15 - SUBURBAN 2-3LN 2WY UNDIVD				401,802	113	80	65	41	7	0
13	293	618.684	0.494	184.834	391,847	581	166	99	52	7
16 - RURAL 2-3LN 2WY DIVD RASD				901,034	5	2	4	1	1	0
0	13	9.713	1.338	2.371	822,290	26	5	5	1	1

REPORT..CARPJ85-  
 DATE...03/03/2014  
 TIME...13:48:48

FLORIDA - DEPARTMENT OF TRANSPORTATION  
 C A R - CRASH ANALYSIS REPORTING SYSTEM  
 SEGMENT BASED CRASH RATE STATISTICS  
 DISTRICT: 05 COUNTY: ALL FOR 2012  
 USERID: KN028CD

PAGE NO 14  
 AS OF: 2014-01-30

COMMENT:

CC	I/A	CRASH	CRASHES	CODE	DESCRIPTIONS	AVG/YEAR	\$/CRASH@CRA	C-NO-INJ	C-POSSIBLE	C-N-INCAP	C-INCAP	C-FATAL	C-NT-FATAL
						CL MILES	\$/CRASH@INJ	P-NO-INJ	P-POSSIBLE	P-N-INCAP	P-INCAP	P-FATAL	P-NT-FATAL
17	-	RURAL	2-3LN	2WY	DIVD PAVD		218,182	61	44	45	18	1	0
		20	149		112.487	1.502	35.682	209,838	297	92	71	18	1
18	-	RURAL	2-3LN	2WY	UNDIVD		690,083	169	75	97	51	22	1
		16	399		836.478	0.496	422.214	704,717	538	162	148	71	24
20	-	URBAN	4-5LN	2WY	DIVD RASD		170,271	1,580	989	681	196	21	2
		522	2,947		1,883.120	1.842	226.120	166,657	7,027	1,555	911	240	23
21	-	URBAN	4-5LN	2WY	DIVD PAVD		155,682	1,004	619	423	125	10	1
		445	1,737		779.321	2.799	92.465	153,739	4,579	1,015	555	156	11
22	-	URBAN	4-5LN	2WY	UNDIVD		228,793	64	54	47	8	2	0
		11	164		73.351	2.385	11.548	276,894	270	97	62	11	3
23	-	SUBURBAN	4-5LN	2WY	DIVD RASD		239,085	1,301	825	532	217	34	0
		158	2,751		2,367.406	1.228	287.493	241,174	5,940	1,468	750	275	37
24	-	SUBURBAN	4-5LN	2WY	DIVD PAVD		316,419	224	119	101	28	10	1
		31	452		305.826	1.579	33.739	301,281	1,185	211	142	36	10
25	-	SUBURBAN	4-5LN	2WY	UNDIVD		375,530	15	8	11	1	1	0
		5	31		18.878	1.906	2.424	352,321	67	18	14	1	1
26	-	RURAL	4-5LN	2WY	DIVD RASD		421,706	174	86	112	59	11	0
		5	437		708.544	0.623	172.364	460,863	587	168	180	82	13
27	-	RURAL	4-5LN	2WY	DIVD PAVD		1095,823	11	5	9	5	3	0
		0	33		54.015	0.610	13.455	1298,597	26	10	11	7	4
28	-	RURAL	4-5LN	2WY	UNDIVD		0	0	0	0	0	0	0
		0	0		0.000	0.000	0.000	0	0	0	0	0	0
30	-	URBAN	6+LN	2WY	DIVD RASD		187,435	2,382	1,477	855	221	45	1
		618	4,363		2,165.925	2.299	147.567	180,683	10,630	2,433	1,160	262	47
31	-	URBAN	6+LN	2WY	DIVD PAVD		185,335	344	182	109	48	5	0
		62	626		229.119	3.002	16.334	188,403	1,480	323	153	69	5
32	-	URBAN	6+LN	2WY	UNDIVD		0	0	0	0	0	0	0
		0	0		0.000	0.000	0.000	0	0	0	0	0	0
33	-	SUBURBAN	6+LN	2WY	DIVD RASD		142,930	566	409	195	47	6	0
		113	1,110		652.796	1.873	40.853	143,636	2,707	713	276	62	6

REPORT..CARPJ85-  
 DATE...03/03/2014  
 TIME...13:48:48

FLORIDA - DEPARTMENT OF TRANSPORTATION  
 C A R - CRASH ANALYSIS REPORTING SYSTEM  
 SEGMENT BASED CRASH RATE STATISTICS  
 DISTRICT: 05 COUNTY: ALL FOR 2012  
 USERID: KN028CD

PAGE NO 15  
 AS OF: 2014-01-30

COMMENT:

CC - CRASH RATE CATEGORY	DESCRIPTIONS	AVG/YEAR	\$/CRASH@CRA	C-NO-INJ	C-POSSIBLE	C-N-INCAP	C-INCAP	C-FATAL	C-NT-FATAL
I/A CRASH	CRASHES	CL MILES	\$/CRASH@INJ	P-NO-INJ	P-POSSIBLE	P-N-INCAP	P-INCAP	P-FATAL	P-NT-FATAL
34 - SUBURBAN 6+LN 2WY DIVD PAVD			1071,240	14	8	4	2	3	0
3	28	5.564	1068,809	65	12	5	7	3	0
35 - SUBURBAN 6+LN 2WY UNDIVD			0	0	0	0	0	0	0
0	0	0.000	0	0	0	0	0	0	0
36 - RURAL 6+LN 2WY DIVD RASD			661,926	17	9	5	0	2	0
0	33	11.096	624,453	100	23	7	0	2	0
37 - RURAL 6+LN 2WY DIVD PAVD			0	0	0	0	0	0	0
0	0	0.000	0	0	0	0	0	0	0
38 - RURAL 6+LN 2WY UNDIVD			0	0	0	0	0	0	0
0	0	0.000	0	0	0	0	0	0	0
40 - URBAN ONE WAY			169,351	220	79	86	19	3	0
121	286	109.421	176,926	874	139	112	34	3	2
41 - SUBURBAN ONE WAY			167,657	18	14	12	6	0	0
14	36	44.741	137,446	88	22	13	6	0	0
42 - RURAL ONE WAY			6,500	1	0	0	0	0	0
1	0	0.678	0	2	0	0	0	0	0
77 - UNDEFINED			241,956	108	53	34	11	3	0
141	68	0.000	240,527	377	92	49	17	3	0
ALL CRASH RATE CATEGORIES			225,430	10,309	5,928	4,131	1,359	251	12
596	21,394	20,155.681	226,785	43,903	10,132	5,754	1,758	273	18

REPORT..CARPJ85-  
 DATE...03/03/2014  
 TIME...13:48:48

FLORIDA - DEPARTMENT OF TRANSPORTATION  
 C A R - CRASH ANALYSIS REPORTING SYSTEM  
 SEGMENT BASED CRASH RATE STATISTICS  
 DISTRICT: ALL COUNTY: ALL FOR 2012  
 USERID: KN028CD

PAGE NO 25  
 AS OF: 2014-01-30

COMMENT:

CC - CRASH RATE CATEGORY	CODE	DESCRIPTIONS	AVG/YEAR	\$/CRASH@CRA	C-NO-INJ	C-POSSIBLE	C-N-INCAP	C-INCAP	C-FATAL	C-NT-FATAL	
I/A CRASH	CRASHES	MV MILES	CRASH RATE	CL MILES	\$/CRASH@INJ	P-NO-INJ	P-POSSIBLE	P-N-INCAP	P-INCAP	P-FATAL	P-NT-FATAL
01 - INTERSTATE URBAN					169,847	11,154	4,005	2,677	967	152	14
179	18,790	25,886.653	0.732	789.014	174,882	35,808	7,257	3,757	1,311	169	17
02 - INTERSTATE RURAL					410,491	1,646	502	531	288	87	1
1	3,054	8,665.893	0.352	706.783	470,341	5,050	1,091	925	436	107	2
03 - TOLL ROAD URBAN					140,007	2,996	1,110	747	223	28	2
77	5,029	8,763.762	0.582	455.887	148,611	9,201	2,018	1,067	288	34	2
04 - TOLL ROAD RURAL					266,146	348	135	109	31	11	1
3	632	1,837.292	0.345	182.852	289,298	1,126	277	186	52	12	1
05 - URBAN OTHER LIMITED ACCESS					99,296	3,274	1,066	496	130	18	2
739	4,247	2,793.249	1.785	138.029	99,881	10,482	1,961	684	173	19	2
06 - RURAL OTHER LIMITED ACCESS					163,254	0	0	1	0	0	0
0	1	8.908	0.112	3.783	125,580	12	0	1	0	0	0
07 - RAMP URBAN					118,840	7,432	2,508	1,433	408	54	2
9,177	2,660	720.832	0.000	209.680	111,958	22,800	4,082	1,916	497	55	2
08 - RAMP RURAL					146,925	8,803	3,287	1,997	688	91	5
9,060	5,811	1,551.473	0.000	848.828	145,281	28,661	5,804	2,775	849	98	7
10 - URBAN 2-3LN 2WY DIVD RASD					110,208	457	170	100	34	2	0
361	402	164.710	4.632	43.112	104,946	1,678	280	139	41	2	0
11 - URBAN 2-3LN 2WY DIVD PAVD					138,799	1,118	462	316	88	10	2
558	1,438	520.628	3.833	126.666	130,641	4,279	787	419	103	10	2
12 - URBAN 2-3LN 2WY UNDIVD					109,184	739	246	204	53	3	1
311	935	481.803	2.586	203.087	98,553	2,615	400	253	59	3	1
13 - SUBURBAN 2-3LN 2WY DIVD RASD					235,027	254	117	61	34	6	1
114	359	198.225	2.386	49.848	241,588	953	193	90	42	7	1
14 - SUBURBAN 2-3LN 2WY DIVD PAVD					213,835	1,813	805	639	228	37	1
735	2,788	1,706.340	2.064	394.978	222,966	7,250	1,528	914	297	42	1
15 - SUBURBAN 2-3LN 2WY UNDIVD					301,725	1,498	619	537	209	55	1
261	2,658	3,347.158	0.872	1,136.132	320,023	5,851	1,279	765	300	62	1
16 - RURAL 2-3LN 2WY DIVD RASD					418,093	89	27	28	11	5	0
26	134	153.714	1.040	40.174	385,498	371	58	43	11	5	0

REPORT..CARPJ85-  
 DATE...03/03/2014  
 TIME...13:48:48

FLORIDA - DEPARTMENT OF TRANSPORTATION  
 C A R - CRASH ANALYSIS REPORTING SYSTEM  
 SEGMENT BASED CRASH RATE STATISTICS  
 DISTRICT: ALL COUNTY: ALL FOR 2012  
 USERID: KN028CD

PAGE NO 26  
 AS OF: 2014-01-30

COMMENT:

CC	I/A	CRASH	CRASHES	CODE	DESCRIPTIONS	AVG/YEAR	\$/CRASH@CRA	C-NO-INJ	C-POSSIBLE	C-N-INCAP	C-INCAP	C-FATAL	C-NT-FATAL
						CL MILES	\$/CRASH@INJ	P-NO-INJ	P-POSSIBLE	P-N-INCAP	P-INCAP	P-FATAL	P-NT-FATAL
17	-	RURAL	2-3LN	2WY	DIVD PAVD		346,119	421	231	177	103	19	0
		165	786		579.922	1.639	215.285	403,358	1,685	482	291	139	25
18	-	RURAL	2-3LN	2WY	UNDIVD		518,651	1,563	614	685	416	124	1
		253	3,150		5,502.525	0.618	3,857.790	572,260	4,943	1,255	1,095	603	148
20	-	URBAN	4-5LN	2WY	DIVD RASD		154,109	10,429	4,225	2,759	848	120	13
		3,200	15,194		6,950.068	2.646	868.719	150,045	40,001	7,206	3,760	1,052	126
21	-	URBAN	4-5LN	2WY	DIVD PAVD		114,942	10,902	3,783	2,314	648	68	5
		3,624	14,096		3,946.452	4.490	489.190	113,465	39,647	6,458	3,056	775	78
22	-	URBAN	4-5LN	2WY	UNDIVD		155,878	1,689	605	360	116	21	1
		406	2,386		555.441	5.026	95.093	145,788	6,153	972	471	132	22
23	-	SUBURBAN	4-5LN	2WY	DIVD RASD		234,271	6,278	3,155	2,251	907	152	6
		834	11,915		9,161.315	1.391	1,070.186	239,637	26,125	6,037	3,318	1,212	162
24	-	SUBURBAN	4-5LN	2WY	DIVD PAVD		229,074	966	419	254	88	24	3
		152	1,602		919.403	1.907	102.950	219,386	3,959	740	367	113	24
25	-	SUBURBAN	4-5LN	2WY	UNDIVD		271,741	30	13	21	5	1	0
		5	65		48.970	1.429	9.828	251,680	159	26	29	5	1
26	-	RURAL	4-5LN	2WY	DIVD RASD		445,833	929	422	424	249	61	5
		79	2,011		3,578.113	0.584	912.677	468,713	3,468	834	707	344	68
27	-	RURAL	4-5LN	2WY	DIVD PAVD		541,152	48	17	22	13	4	0
		1	103		259.307	0.401	75.471	612,920	142	34	27	20	5
28	-	RURAL	4-5LN	2WY	UNDIVD		0	0	0	0	0	0	0
		0	0		0.393	0.000	0.144	0	0	0	0	0	0
30	-	URBAN	6+LN	2WY	DIVD RASD		133,441	28,083	11,376	6,487	1,952	245	10
		6,743	41,410		13,931.636	3.456	912.327	129,474	107,736	19,700	8,840	2,389	254
31	-	URBAN	6+LN	2WY	DIVD PAVD		162,860	2,038	786	475	171	26	0
		518	2,978		871.638	4.010	63.895	166,000	7,926	1,398	642	227	29
32	-	URBAN	6+LN	2WY	UNDIVD		63,440	45	7	8	2	0	0
		10	52		1.559	39.769	0.305	44,017	142	7	8	2	0
33	-	SUBURBAN	6+LN	2WY	DIVD RASD		172,483	5,299	2,828	1,510	561	75	5
		815	9,463		4,982.078	2.062	312.533	177,880	22,518	5,015	2,128	736	84

REPORT..CARPJ85-  
 DATE...03/03/2014  
 TIME...13:48:48

FLORIDA - DEPARTMENT OF TRANSPORTATION  
 C A R - CRASH ANALYSIS REPORTING SYSTEM  
 SEGMENT BASED CRASH RATE STATISTICS  
 DISTRICT: ALL COUNTY: ALL FOR 2012  
 USERID: KN028CD

PAGE NO 27  
 AS OF: 2014-01-30

COMMENT:

CC - CRASH RATE CATEGORY	DESCRIPTIONS	AVG/YEAR	\$/CRASH@CRA	C-NO-INJ	C-POSSIBLE	C-N-INCAP	C-INCAP	C-FATAL	C-NT-FATAL
I/A CRASH	CRASHES	CL MILES	\$/CRASH@INJ	P-NO-INJ	P-POSSIBLE	P-N-INCAP	P-INCAP	P-FATAL	P-NT-FATAL
34 - SUBURBAN 6+LN 2WY DIVD PAVD			206,978	170	60	40	5	4	0
11	268	174.093	234,385	588	95	53	11	5	0
35 - SUBURBAN 6+LN 2WY UNDIVD			53,072	2	2	0	0	0	0
0	4	0.000	33,215	10	2	0	0	0	0
36 - RURAL 6+LN 2WY DIVD RASD			371,521	35	19	15	4	2	0
4	71	55.530	347,923	184	45	19	4	2	0
37 - RURAL 6+LN 2WY DIVD PAVD			99,645	0	1	0	0	0	0
0	1	16.403	66,430	0	1	0	0	0	0
38 - RURAL 6+LN 2WY UNDIVD			0	0	0	0	0	0	0
0	0	0.000	0	0	0	0	0	0	0
40 - URBAN ONE WAY			101,268	4,102	1,085	625	187	22	4
1,644	4,381	749.260	94,849	14,038	1,743	851	236	22	6
41 - SUBURBAN ONE WAY			102,155	723	194	116	32	4	0
280	789	379.951	99,839	2,301	312	142	36	5	0
42 - RURAL ONE WAY			147,646	81	31	24	4	1	0
101	40	16.652	133,479	294	46	28	5	1	0
77 - UNDEFINED			145,172	923	290	171	59	10	2
1,064	391	0.000	148,762	3,048	499	219	74	12	4
ALL CRASH RATE CATEGORIES			175,344	93,608	37,152	23,992	8,330	1,379	77
4,444	160,094	109,481.349	177,467	342,036	65,789	33,609	10,820	1,516	100